



**UC Irvine**  
Claire Trevor School of the Arts

# **Music Programs**



# Music Programs



B.A. in Music  
B.Mus. in Music Performance  
Minor in Music

- Courses for both programs include musicianship, music theory, music history, music analysis, music culture, composition, and music technology
- B.A. students will choose an emphasis: History and Theory (HTM) or Integrated Composition, Improvisation, and Technology (ICIT)
- B.Mus. students will specialize in one instrument or vocal throughout their program
  - Lessons will only be in one area
  - \$500 "lab fee" assessed for individual lessons
    - lessons for declared B.Mus majors only

## B.Mus.Specializations in:

- Instrumental Performance in violin, viola, cello, double bass
- Piano Performance
- Vocal Performance





# B.A. or B.Mus.

## B.A. in Music

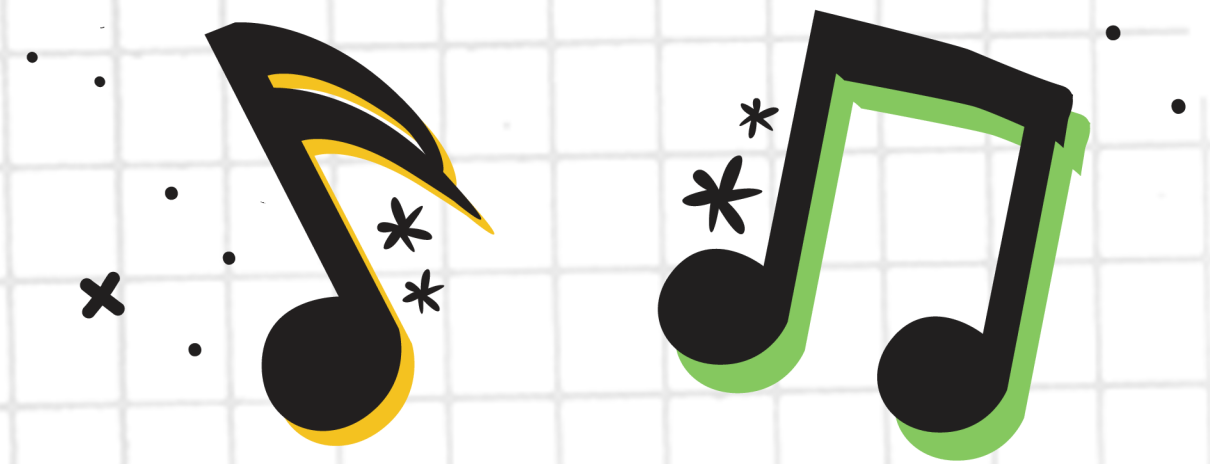
- No audition required
- No lessons
- Not focused on just one instrument/vocal
- Music studies
- More flexible curriculum to allow for double major, UCEAP (study abroad) and other curricular options
- Capstone project in HTM or ICIT emphasis

## B.Mus. in Music Performance

- Audition required
- Designed for students who aspire to work as professional musicians - conservatory style
  - Only for classical voice, violin, cello, bass, & classical piano
- Enrollment in individual lessons and large/small ensembles every quarter until degree completion
- Required jury in 6<sup>th</sup> quarter of lessons in order to continue with program (not for jr. transfers)
- Additional performance course work
- Piano proficiency exam required
- Senior recital

**NOTE: One program is not better than the other. It all depends on what you want out of your degree.**

# Common Curriculum



## **MUSIC 15** Musicianship

*MUSIC 15 is a repeatable course students must take starting at the beginning of their major studies. At the end of the course, there is a Musicianship Proficiency Exam, which students must pass within six quarters of entering the major.*

**MUSIC 16A** Music Theory (*fall quarter only*)

**MUSIC 16B** Music Theory (*winter quarter only*)

**MUSIC 16C** Music Theory (*spring quarter only*)

*Placement based on exam.*

**MUSIC 16D** Theory/Musicianship (*fall quarter only*)

**MUSIC 39A-B** The Classical Tradition (*winter & spring quarter only*)

**MUSIC 51** Music & Computers

**ONE** course in Composition, Improvisation, and Technology

**TWO** courses in History and Theory





A decorative graphic featuring a yellow treble clef on the left, a black bass clef on the right, and various musical symbols like asterisks and dots scattered around them. A white banner with a black border is positioned in the center, containing the text 'B.A. in Music'.

# B.A. in Music

## COMMON CURRICULUM



### Performance and Practice

- **THREE** courses in **Performance and Practice** from: MUSIC 21A, 21B, 21C, 158A, 158B, 158C, 160, 161, 162, 164, 171, 176, 178, 182, 193, 197

### Emphasis (SELECT ONE)

*Courses listed in the Common Curriculum that are also listed under an emphasis requirement may not be used simultaneously to satisfy both requirements - only one*

A decorative graphic featuring a yellow treble clef on the left, a black bass clef on the right, and various musical symbols like asterisks and dots scattered around them.

# B.A. in Music

## COMMON CURRICULUM



### History & Theory (HTM Emphasis)

- TWO courses from **Skills**: MUSIC 131, 132, 136, 147, 150, 151, 153, 155, 157, 181, 183A, 183B, 183C
- FOUR courses from **Music and Culture**: MUSIC 140, 141, 142/142W, 143/143W, 144/144W, 145/145W, 146, 148, 149; AFAM 143, 144
- B.A. PROJECT

### Integrated Composition, Improvisation, and Technology (ICIT Emphasis)

- ONE course in Music Technology: MUSIC 147 or 151
- MUSIC 150 Composition
- MUSIC 181 Improvisation
- FOUR quarters of MUSIC 186
- ONE course from the following: MUSIC 131, 132, 136, 147, 151, 153, 155, 157, 183A, 183B, 183C
- B.A. PROJECT



# 4-Year Sample B.A. Course Plan HTM Emphasis

Sample course plans are for planning purposes only and are subject to change based on the student's individual academic record and curriculum updates.

<https://www.arts.uci.edu/student-affairs-undergraduate-degree-minor-requirements#Course%20Plans>

Fall		Winter		Spring	
First Year					
Music 15	2 units	Music 15	2 units	Music 15	2 units
Music 16A^	4 units	Music 16B^	4 units	Music 16C^	4 units
Writing* or GE II- III, V-VIII	4 units	Music 39A^	4 units	Music 39B^	4 units
Performance & Practice	2 units	Writing* or GE II- III, V-VIII	4 units	Writing* or GE II- III, V-VIII	4 units
		Performance & Practice	2 units	Performance & Practice	2 units
Total: 14 units		Total: 16 units		Total: 16 units	
Second Year					
Music 15	2 units	Music 15	2 units	Music 15	2 units
Music 16D^	4 units	Music 51	4 units	History & Theory**/Comp Improv Tec	4 units
History & Theory**/Comp Improv Tec	4 units	HTM Emphasis	4 units	GE II- III, V-VIII or Elective	4 units
GE II- III, V-VIII or Elective	4 units	GE II- III, V-VIII or Elective	4 units	GE II- III, V-VIII or Elective	4 units
GE II- III, V-VIII or Elective	4 units	GE II- III, V-VIII or Elective	4 units		
Total: 18 units		Total: 18 units		Total: 14 units	
Third Year					
History & Theory**/Comp Improv Tec	4 units	HTM Emphasis	4 units	HTM Emphasis	4 units
HTM Emphasis	4 units	GE II- III, V-VIII or Elective	4 units	GE II- III, V-VIII or Elective	4 units
GE II- III, V-VIII or Elective	4 units	GE II- III, V-VIII or Elective	4 units	GE II- III, V-VIII or Elective	4 units
GE II- III, V-VIII or Elective	4 units				
Total: 16 units		Total: 16 units		Total: 16 units	
Fourth Year					
HTM Emphasis	4 units	HTM Emphasis	4 units	Elective	4 units
Elective	4 units	Elective	4 units	Elective	4 units
Elective	4 units	Elective	4 units	Elective	4 units
Finalize HTM Project w/ Dept. APPLY TO GRADUATE					
Total: 12 units		Total: 12 units		Total: 12 units	

# 4-Year Sample B.A. Course Plan ICIT Emphasis

Sample course plans are for planning purposes only and are subject to change based on the student's individual academic record and curriculum updates.

<https://www.arts.uci.edu/student-affairs-undergraduate-degree-minor-requirements#Course%20Plans>

Fall		Winter		Spring	
First Year					
Music 15	2 units	Music 15	2 units	Music 15	2 units
Music 16A^	4 units	Music 16B^	4 units	Music 16C^	4 units
Writing* or GE II- III, V-VIII	4 units	Music 39A^	4 units	Music 39B^	4 units
Performance & Practice	2 units	Writing* or GE II- III, V-VIII	4 units	Writing* or GE II- III, V-VIII	4 units
		Performance & Practice	2 units	Performance & Practice	2 units
Total: 14 units		Total: 16 units		Total: 16 units	
Second Year					
Music 15	2 units	Music 15	2 units	Music 15	2 units
Music 16D^	4 units	Music 51	4 units	History & Theory**/Comp Improv Tec	4 units
Music 150	4 units	GE II- III, V-VIII or Elective	4 units	GE II- III, V-VIII or Elective	4 units
GE II- III, V-VIII or Elective	4 units	GE II- III, V-VIII or Elective	4 units	GE II- III, V-VIII or Elective	4 units
GE II- III, V-VIII or Elective	4 units	GE II- III, V-VIII or Elective	4 units	GE II- III, V-VIII or Elective	4 units
Total: 18 units		Total: 18 units		Total: 18 units	
Third Year					
History & Theory**/Comp Improv Tec	4 units	Music 147 or 151	4 units	History & Theory**/Comp Improv Tec	4 units
Music 186	2 units	Music 186	2 units	Music Elective	4 units
GE II- III, V-VIII or Elective	4 units	GE II- III, V-VIII or Elective	4 units	GE II- III, V-VIII or Elective	4 units
GE II- III, V-VIII or Elective	4 units	GE II- III, V-VIII or Elective	4 units	GE II- III, V-VIII or Elective	4 units
Total: 14 units		Total: 14 units		Total: 16 units	
Fourth Year					
Music 181	4 units	Music 186	2 units	Elective	4 units
Music 186	2 units	Elective	4 units	Elective	4 units
Elective	4 units	Elective	4 units	Elective	4 units
Elective	2 units	Elective	2 units		
Finalize ICIT Project w/ Dept. APPLY TO GRADUATE					
Total: 12 units		Total: 12 units		Total: 12 units	



# 2-Year Sample Transfer B.A. Course Plan HTM Emphasis

Sample course plans are for planning purposes only and are subject to change based on the student's individual academic record and curriculum updates.

<https://www.arts.uci.edu/student-affairs-undergraduate-degree-minor-requirements#Course%20Plans>

Fall		Winter		Spring	
First Year					
Music 15	2 units	Music 15	2 units	Music 15	2 units
Music 16A^	4 units	Music 16B^	4 units	Music 16C^	4 units
History & Theory**/Comp Improv Tec	4 units	Music 39A^	4 units	Music 39B^	4 units
Performance & Practice	2 units	Music 51	4 units	History & Theory**/Comp Improv Tec	4 units
HTM Emphasis	4 units	Performance & Practice	2 units	Performance & Practice	2 units
Total: 16 units		Total: 16 units		Total: 16 units	
Second Year					
Music 15	2 units	Music 15	2 units	Music 15	2 units
Music 16D^	4 units	HTM Emphasis	4 units	HTM Emphasis	4 units
History & Theory**/Comp Improv Tec	4 units	HTM Emphasis	4 units	HTM Emphasis	4 units
HTM Emphasis	4 units	Elective	2 units	Elective	2 units
Finalize HTM Project w/ Dept.					
APPLY TO GRADUATE					
Total: 14 units		Total: 12 units		Total: 12 units	
^ Course only offered during that quarter and must be taken at that time					
**If students take a History & Theory course with a "W" notation, such as Music 144W or 145W, the course will count toward one History & Theory requirement and upper-division writing. Otherwise, students must satisfy upper-division writing outside of the Music department with a grade of "C-" or better (such as Writing 139W).					
Courses listed as part of the Common Curriculum that are also listed under an emphasis requirement may not be used simultaneously to satisfy both requirements - only one.					
Assumes:					
Transferred in 105 quarter units from the California Community College (Junior Transfer)					
All GE courses completed via UC IGETC except for Upper Division Writing					
Placed into Music 15 and Music 16A					
Full-time status (12 or more quarter units)					
University Requirements (ELWR and AH&I) Satisfied					
Upper-division writing as a major course**					
No summer coursework or Advanced Placement					
180 units (minimum) completed by graduation					

# 2-Year Sample Transfer B.A. Course Plan ICIT Emphasis

Sample course plans are for planning purposes only and are subject to change based on the student's individual academic record and curriculum updates.

<https://www.arts.uci.edu/student-affairs-undergraduate-degree-minor-requirements#Course%20Plans>

Fall		Winter		Spring	
First Year					
Music 15	2 units	Music 15	2 units	Music 15	2 units
Music 16A^	4 units	Music 16B^	4 units	Music 16C^	4 units
History & Theory**/Comp Improv Tec	4 units	Music 39A^	4 units	Music 39B^	4 units
Performance & Practice	2 units	Music 51	4 units	History & Theory**/Comp Improv Tec	4 units
		Performance & Practice	2 units	Music 186	2 units
Total: 12 units		Total: 16 units		Total: 16 units	
Second Year					
Music 15	2 units	Music 15	2 units	Music 15	2 units
Music 16D^	4 units	Music 147 or 151	4 units	History & Theory**/Comp Improv Tec	4 units
Music 150	4 units	ICIT Music Elective	4 units	Music 186	2 units
Music 181	4 units	Music 186	2 units	Elective	4 units
Music 186	2 units	Performance & Practice	2 units		
Finalize ICIT Project w/ Dept.					
APPLY TO GRADUATE					
Total: 16 units		Total: 14 units		Total: 12 units	
^ Course only offered during that quarter and must be taken at that time					
**If students take a History & Theory course with a "W" notation, such as Music 144W or 145W, the course will count toward one History & Theory requirement and upper-division writing. Otherwise, students must satisfy upper-division writing outside of the Music department with a grade of "C-" or better (such as Writing 139W).					
Courses listed as part of the Common Curriculum that are also listed under an emphasis requirement may not be used simultaneously to satisfy both requirements - only one.					
Assumes:					
Transferred in 105 quarter units from the California Community College (Junior Transfer)					
All GE courses completed via UC IGETC except for Upper Division Writing					
Placed into Music 15 and Music 16A					
Full-time status (12 or more quarter units)					
University Requirements (ELWR and AH&I) Satisfied					
Upper-division writing as a major course**					
No summer coursework or Advanced Placement					
180 units (minimum) completed by graduation					





# B.Mus. in Music Performance



**COMMON  
CURRICULUM**

**&**

**SIX** quarters of instrumental/vocal instruction  
(MUSIC 65, 66 & 68)\*

*\*Waived for junior transfers*

**SIX** quarters of instrumental/vocal instruction  
(MUSIC 165, 166 & 168)^

*^A jury in the student's sixth quarter is required in order for the student to advance to upper division lessons.*

**Piano Proficiency Exam**

**Senior Recital**

# B.Mus. in Music Performance

## SPECIALIZATIONS



### Piano

*\*For Music 176, junior transfers must complete a minimum of six quarters*

- **MUSIC 21 A-B-C: Keyboard Skills**
- **MUSIC 122 A-B-C: Piano Literature**
- **MUSIC 126: Piano Pedagogy**
- **TWELVE\* quarters of MUSIC 176**
- **THREE quarters of MUSIC 162P, 164P, 166P, or 197**

### Vocal Arts

*^For Music 162 & 171, junior transfers must complete minimum of three quarters and sophomore transfers must complete a minimum of six quarters*

- **MUSIC 156 A-B: Song Literature**
- **MUSIC 158 A-B-C: Diction**
- **MUSIC 164: Opera Workshop**
- **NINE^ quarters of MUSIC 162 or 171**
- **JUNIOR RECITAL**

### Strings

*(Violin, Viola, Cello, & Double Bass)*

*°For Music 160 & 176, junior transfers must complete minimum of six quarters and sophomore transfers must complete a minimum of nine quarters*

- **TWELVE° quarters of MUSIC 160**
- **TWELVE° quarters of MUSIC 176**
- **JUNIOR RECITAL**



# 4-Year Sample B.Mus. Course Plan

## Piano

Sample course plans are for planning purposes only and are subject to change based on the student's individual academic record and curriculum updates.

<https://www.arts.uci.edu/student-affairs-undergraduate-degree-minor-requirements#Course%20Plans>

Piano - B.Mus.					
Fall		Winter		Spring	
First Year					
Music 15	2 units	Music 15	2 units	Music 15	2 units
Music 16A^	4 units	Music 16B^	4 units	Music 16C^	4 units
Music 65	2 units	Music 39A^	4 units	Music 39B^	4 units
Music 176	2 units	Music 65	2 units	Music 65	2 units
Writing* or GE II- III, V-VIII	4 units	Music 176	2 units	Music 176	2 units
		Writing* or GE II- III, V-VIII	4 units	Writing* or GE II- III, V-VIII	4 units
Total: 14 units		Total: 18 units		Total: 18 units	
Second Year					
Music 15	2 units	Music 15	2 units	Music 15	2 units
Music 16D^	4 units	Music 65	2 units	Music 65	2 units
Music 65	2 units	Music 51	4 units	Music 21C^^	1 units
Music 21A^^	1 units	Music 21B^^	1 units	Music 176	2 units
Music 176	2 units	Music 176	2 units	GE II- III, V-VIII or Elective	4 units
GE II- III, V-VIII or Elective	4 units	GE II- III, V-VIII or Elective	4 units	GE II- III, V-VIII or Elective	4 units
Total: 15 units		Total: 15 units		6th Quarter Jury to Advanced Lessons Total: 15 units	
Third Year					
History & Theory**/Comp Improv Tech	4 units	History & Theory**/Comp Improv Tech	4 units	History & Theory**/Comp Improv Tech	4 units
Music 165	2 units	Music 165	2 units	Music 165	2 units
Music 176	2 units	Music 176	2 units	Music 176	2 units
Music 162P, 164P, 166P, or 197	2 units	Music 162P, 164P, 166P, or 197	2 units	Music 126	2 units
GE II- III, V-VIII or Elective	4 units	GE II- III, V-VIII or Elective	4 units	GE II- III, V-VIII or Elective	4 units
GE II- III, V-VIII or Elective	4 units	GE II- III, V-VIII or Elective	4 units	GE II- III, V-VIII or Elective	4 units
Total: 18 units		Total: 18 units		Total: 18 units	
Fourth Year					
Music 165	2 units	Music 165	2 units	Music 165	2 units
Music 176	2 units	Music 176	2 units	Music 176	2 units
Music 122A^^	2 units	Music 122B^^	2 units	Music 122C^^	2 units
Music 162P, 164P, 166P, or 197	2 units	GE II- III, V-VIII or Elective	4 units	Elective	4 units
GE II- III, V-VIII or Elective	4 units	GE II- III, V-VIII or Elective	4 units	Elective	2 units
Piano Proficiency Exam Finalize Senior Recital w/ Dept. APPLY TO GRADUATE Total: 12 units		Total: 14 units		Total: 12 units	

# 4-Year Sample B.Mus. Course Plan

## Voice

Sample course plans are for planning purposes only and are subject to change based on the student's individual academic record and curriculum updates.

<https://www.arts.uci.edu/student-affairs-undergraduate-degree-minor-requirements#Course%20Plans>

Voice - B.Mus.					
Fall		Winter		Spring	
First Year					
Music 15	2 units	Music 15	2 units	Music 15	2 units
Music 16A^	4 units	Music 16B^	4 units	Music 16C^	4 units
Music 68	2 units	Music 39A^	4 units	Music 39B^	4 units
Music 162 or 171	2 units	Music 68	2 units	Music 68	2 units
Writing* or GE II- III, V-VIII	4 units	Music 162 or 171	2 units	Music 162 or 171	2 units
		Writing* or GE II- III, V-VIII	4 units	Writing* or GE II- III, V-VIII	4 units
Total: 14 units		Total: 18 units		Total: 18 units	
Second Year					
Music 15	2 units	Music 15	2 units	Music 15	2 units
Music 16D^	4 units	Music 68	2 units	Music 68	2 units
Music 68	2 units	Music 51	4 units	Music 162 or 171	2 units
Music 162 or 171	2 units	Music 162 or 171	2 units	GE II- III, V-VIII or Elective	4 units
Music 156A^^	2 units	Music 156B^^	2 units	GE II- III, V-VIII or Elective	4 units
GE II- III, V-VIII or Elective	4 units	GE II- III, V-VIII or Elective	4 units	6th Quarter Jury to Advanced Lessons	
Total: 16 units		Total: 16 units		Total: 14 units	
Third Year					
History & Theory**/Comp Improv Tech	4 units	History & Theory**/Comp Improv Tech	4 units	History & Theory**/Comp Improv Tec	4 units
Music 168	2 units	Music 168	2 units	Music 168	2 units
Music 162 or 171	2 units	Music 162 or 171	2 units	Music 162 or 171	2 units
Music 164	2 units	Music 164	2 units	Music 158C^^	2 units
Music 158A^^	2 units	Music 158B^^	2 units	GE II- III, V-VIII or Elective	4 units
GE II- III, V-VIII or Elective	4 units	GE II- III, V-VIII or Elective	4 units	GE II- III, V-VIII or Elective	4 units
Total: 16 units		Total: 16 units		Junior Recital	
				Total: 18 units	
Fourth Year					
Music 168	2 units	Music 168	2 units	Music 168	2 units
GE II- III, V-VIII or Elective	4 units	GE II- III, V-VIII or Elective	4 units	Elective	4 units
GE II- III, V-VIII or Elective	4 units	GE II- III, V-VIII or Elective	4 units	Elective	4 units
GE II- III, V-VIII or Elective	4 units	Elective	2 units	Elective	2 units
Piano Proficiency Exam					
Finalize Senior Recital w/ Dept.					
APPLY TO GRADUATE					
Total: 14 units		Total: 12 units		Total: 12 units	



# 4-Year Sample B.Mus. Course Plan

## Strings

Sample course plans are for planning purposes only and are subject to change based on the student's individual academic record and curriculum updates.

<https://www.arts.uci.edu/student-affairs-undergraduate-degree-minor-requirements#Course%20Plans>

Strings (Violin, Viola, Cello & Bass) - B.Mus.					
Fall		Winter		Spring	
First Year					
Music 15	2 units	Music 15	2 units	Music 15	2 units
Music 16A^	4 units	Music 16B^	4 units	Music 16C^	4 units
Music 66	2 units	Music 39A^	4 units	Music 39B^	4 units
Music 160 or 161	2 units	Music 66	2 units	Music 66	2 units
Music 176	2 units	Music 160 or 161	2 units	Music 160 or 161	2 units
Writing* or GE II- III, V-VIII	4 units	Music 176	2 units	Music 176	2 units
		Writing* or GE II- III, V-VIII	4 units	Writing* or GE II- III, V-VIII	4 units
Total: 16 units		Total: 20 units		Total: 20 units	
Second Year					
Music 15	2 units	Music 15	2 units	Music 15	2 units
Music 16D^	4 units	Music 66	2 units	Music 66	2 units
Music 66	2 units	Music 51	4 units	Music 160 or 161	2 units
Music 160 or 161	2 units	Music 160 or 161	2 units	Music 176	2 units
Music 176	2 units	Music 176	2 units	GE II- III, V-VIII or Elective	4 units
GE II- III, V-VIII or Elective	4 units	GE II- III, V-VIII or Elective	4 units	GE II- III, V-VIII or Elective	4 units
GE II- III, V-VIII or Elective	4 units	GE II- III, V-VIII or Elective	4 units	6th Quarter Jury to Advanced Lessons	
Total: 20 units		Total: 20 units		Total: 16 units	
Third Year					
History & Theory**/Comp Improv Tech	4 units	History & Theory**/Comp Improv Tech	4 units	History & Theory**/Comp Improv Tech	4 units
Music 166	2 units	Music 166	2 units	Music 166	2 units
Music 160 or 161	2 units	Music 160 or 161	2 units	Music 160 or 161	2 units
Music 176	2 units	Music 176	2 units	Music 176	2 units
GE II- III, V-VIII or Elective	4 units	GE II- III, V-VIII or Elective	4 units	GE II- III, V-VIII or Elective	4 units
GE II- III, V-VIII or Elective	4 units	GE II- III, V-VIII or Elective	4 units	GE II- III, V-VIII or Elective	4 units
Total: 18 units		Total: 18 units		Junior Recital	
				Total: 18 units	
Fourth Year					
Music 166	2 units	Music 166	2 units	Music 166	2 units
Music 160 or 161	2 units	Music 160 or 161	2 units	Music 160 or 161	2 units
Music 176	2 units	Music 176	2 units	Music 176	2 units
GE II- III, V-VIII or Elective	4 units	Elective	4 units	Elective	4 units
Elective	2 units	Elective	2 units	Elective	2 units
Piano Proficiency Exam					
Finalize Senior Recital w/ Dept.					
APPLY TO GRADUATE					
Total: 12 units		Total: 12 units		Total: 12 units	



# 2-Year Sample B.Mus. Course Plan

## Piano

Sample course plans are for planning purposes only and are subject to change based on the student's individual academic record and curriculum updates.

<https://www.arts.uci.edu/student-affairs-undergraduate-degree-minor-requirements#Course%20Plans>

Piano - B.Mus. (Transfer)					
Fall		Winter		Spring	
First Year					
Music 15	2 units	Music 15	2 units	Music 15	2 units
Music 16A^	4 units	Music 16B^	4 units	Music 16C^	4 units
Music 165	2 units	Music 39A^	4 units	Music 39B^	4 units
Music 21A^^	1 unit	Music 51	4 units	Music 165	2 units
Music 176	2 units	Music 165	2 units	Music 21C^^	1 unit
History & Theory**/Comp Improv Tec	4 units	Music 21B^^	1 unit	Music 176	2 units
		Music 176	2 units		
Total: 15 units		Total: 19 units		Total: 15 units	
Second Year					
Music 15	2 units	Music 15	2 units	Music 15	2 units
Music 16D^	4 units	History & Theory**/Comp Improv Te	4 units	Music 165	2 units
Music 165	2 units	Music 165	2 units	Music 126	2 units
History & Theory**/Comp Improv Tec	4 units	Music 122B^^	2 units	Music 122C^^	2 units
Music 122A^^	2 units	Music 162P, 164P, 166P, or 197	2 units	Music 162P, 164P, 166P, or 197	2 units
Music 162P, 164P, 166P, or 197	2 units	Music 176	2 units	Music 176	2 units
Music 176	2 units				
Piano Proficiency Exam Finalize Senior Recital w/ Dept. APPLY TO GRADUATE Total: 18 units		Total: 14 units		Total: 12 units	
^ Course only offered during that quarter and must be taken at that time					
**If students take a History & Theory course with a "W" notation, such as Music 144W or 145W, the course will count toward one History & Theory requirement and upper-division writing. Otherwise, students must satisfy upper-division writing outside of the Music department with a grade of "C-" or better (such as Writing 139W).					
Courses listed as part of the Common Curriculum that are also listed under an emphasis requirement may not be used simultaneously to satisfy both requirements - only one.					
Assumes:					
Transferred in 105 quarter units from the California Community College (Junior Transfer)					
All GE courses completed via UC IGETC except for Upper Division Writing					
Placed into Music 15 and Music 16A					
Full-time status (12 or more quarter units)					
University Requirements (ELWR and AH&I) Satisfied					
Upper-division writing as a major course**					
No summer coursework or Advanced Placement					
180 units (minimum) completed by graduation					



# 2-Year Sample B.Mus. Course Plan

## Voice

Sample course plans are for planning purposes only and are subject to change based on the student's individual academic record and curriculum updates.

<https://www.arts.uci.edu/student-affairs-undergraduate-degree-minor-requirements#Course%20Plans>

Voice - B.Mus. (Transfer)					
Fall		Winter		Spring	
First Year					
Music 15	2 units	Music 15	2 units	Music 15	2 units
Music 16A^	4 units	Music 16B^	4 units	Music 16C^	4 units
Music 168	2 units	Music 39A^	4 units	Music 39B^	4 units
Music 162 or 171	2 units	Music 168	2 units	Music 168	2 units
Music 156A^^	2 units	Music 162 or 171	2 units	Music 162 or 171	2 units
		Music 156B^^	2 units	Music 164	2 units
Total: 12 units		Total: 16 units		Junior Recital Total: 16 units	
Second Year					
Music 15	2 units	Music 15	2 units	Music 15	2 units
Music 16D^	4 units	History & Theory**/Comp Improv Tec	4 units	Music 168	2 units
Music 168	2 units	Music 168	2 units	Music 158C^^	2 units
History & Theory**/Comp Improv Tec	4 units	Music 158B^^	2 units	History & Theory**/Comp Improv Tec	4 units
Music 158A^^	2 units	Music 164	2 units	Elective	2 units
		Music 51	4 units		
Piano Proficiency Exam Finalize Senior Recital w/ Dept. APPLY TO GRADUATE Total: 14 units		Total: 16 units		Total: 12 units	
^ Course only offered during that quarter and must be taken at that time					
**If students take a History & Theory course with a "W" notation, such as Music 144W or 145W, the course will count toward one History & Theory requirement and upper-division writing. Otherwise, students must satisfy upper-division writing outside of the Music department with a grade of "C-" or better (such as Writing 139W).					
Courses listed as part of the Common Curriculum that are also listed under an emphasis requirement may not be used simultaneously to satisfy both requirements - only one.					
Assumes:					
Transferred in 105 quarter units from the California Community College (Junior Transfer)					
All GE courses completed via UC IGETC except for Upper Division Writing					
Placed into Music 15 and Music 16A					
Full-time status (12 or more quarter units)					
University Requirements (ELWR and AH&I) Satisfied					
Upper-division writing as a major course**					
No summer coursework or Advanced Placement					
180 units (minimum) completed by graduation					

# 2-Year Sample B.Mus. Course Plan

## Strings

Sample course plans are for planning purposes only and are subject to change based on the student's individual academic record and curriculum updates.

<https://www.arts.uci.edu/student-affairs-undergraduate-degree-minor-requirements#Course%20Plans>

Strings (Violin, Viola, Cello & Bass) - B.Mus. (Transfer)					
Fall		Winter		Spring	
First Year					
Music 15	2 units	Music 15	2 units	Music 15	2 units
Music 16A^	4 units	Music 16B^	4 units	Music 16C^	4 units
Music 166	2 units	Music 39A^	4 units	Music 39B^	4 units
Music 160 or 161	2 units	Music 51	4 units	Music 166	2 units
Music 176	2 units	Music 160 or 161	2 units	Music 160 or 161	2 units
		Music 176	2 units	Music 176	2 units
Total: 12 units		Total: 19 units		Junior Recital Total: 15 units	
Second Year					
Music 15	2 units	Music 15	2 units	Music 15	2 units
Music 16D^	4 units	History & Theory**/Comp Improv Tech	4 units	Music 166	2 units
Music 166	2 units	Music 166	2 units	History & Theory**/Comp Improv Tech	4 units
History & Theory**/Comp Improv Tec	4 units	Music 160 or 161	2 units	Music 160 or 161	2 units
Music 160 or 161	2 units	Music 176	2 units	Music 176	2 units
Music 176	2 units				
Piano Proficiency Exam Finalize Senior Recital w/ Dept. APPLY TO GRADUATE Total: 18 units		Total: 12 units		Total: 12 units	
^ Course only offered during that quarter and must be taken at that time					
**If students take a History & Theory course with a "W" notation, such as Music 144W or 145W, the course will count toward one History & Theory requirement and upper-division writing. Otherwise, students must satisfy upper-division writing outside of the Music department with a grade of "C-" or better (such as Writing 139W).					
Courses listed as part of the Common Curriculum that are also listed under an emphasis requirement may not be used simultaneously to satisfy both requirements - only one.					
Assumes:					
Transferred in 105 quarter units from the California Community College (Junior Transfer)					
All GE courses completed via UC IGETC except for Upper Division Writing					
Placed into Music 15 and Music 16A					
Full-time status (12 or more quarter units)					
University Requirements (ELWR and AH&I) Satisfied					
Upper-division writing as a major course**					
No summer coursework or Advanced Placement					
180 units (minimum) completed by graduation					



# Additional Information

## Musicianship & Theory Placement

- All incoming Music students must attend the Musicianship Placement Information Session and take the Music Theory Placement Exam during Welcome Week to validate their knowledge.
  - Students will be notified of their placement by the end of Welcome Week.
  - <https://music.arts.uci.edu/music-theory-and-musicianship-resources>
- Students who do not have any theory background or need to supplement their theory skills will need to enroll in MUSIC 25A & MUSIC 25B when offered.

## Ensemble Auditions

Participate in the Department's ensembles is available to ALL UCI students by audition. Auditions are generally held in the fall during Welcome Week or at the start of the quarter:

- Choral Ensembles
- Jazz Ensembles
- Opera
- Symphony Orchestra
- Vocal Arts
- Wind Ensemble
- UCI Anteater Band via UCI Athletics: <https://sites.uci.edu/anteaterband/>

For more information: <https://music.arts.uci.edu/performance-opportunities>