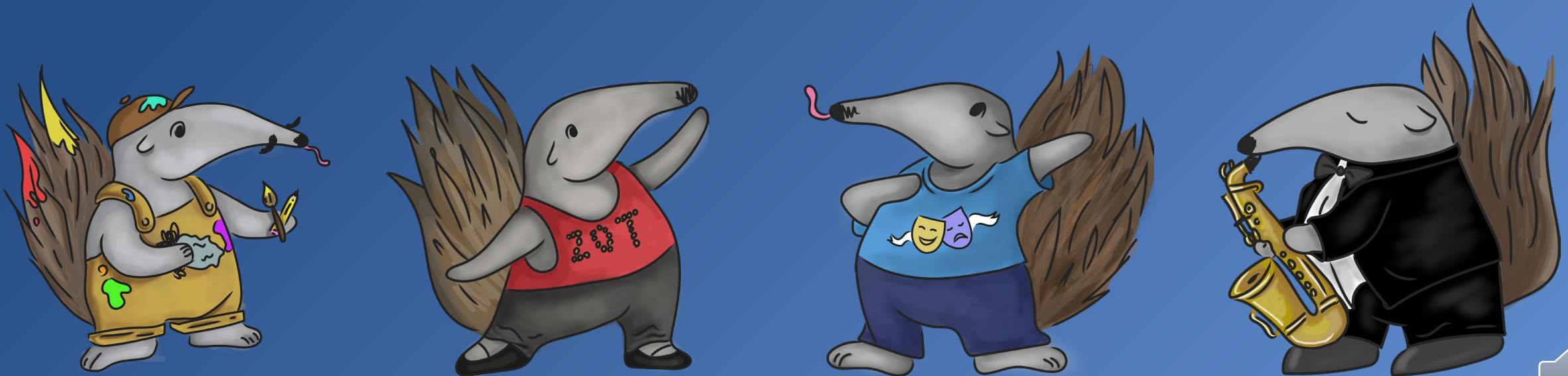


Registering for the First Quarter You Will Not Have the Perfect Schedule



Course Load

- **Take the first quarter to adjust**
- **12-16 units = regular load**
 - For each unit = 3 hours of study per week
- **Max units in quarter = 20 units**
 - After first quarter, if GPA 3.0 or above, may take 20+ units with Arts Student Affairs approval
- **Remember one quarter = 10 weeks of instruction + 1 week for finals**
- **If you have financial aid**
 - Financial aid is applied to fees automatically once you enroll in 6 minimum required units (MRU)
 - You must be enrolled in these 6 MRU by the fee deadline



Registration Deadlines

- **Via WebReg**
 - **ADD:** by the end of the week 2 by 5 PM
 - **DROP:** by the end of the week 2 by 5 PM
 - **CHANGE GRADING OPTION:** by the end of the 2nd week by 5 PM
- An **Enrollment Exception** request (via StudentAccess) is required after the registration deadlines for extenuating circumstances and is reviewed by the departments.
- **Deadlines are listed in the Academic Calendar:**
<https://www.reg.uci.edu/calendars/quarterly/2023-2024/quarterly23-24.html>



Preparing for Registration

- ❑ Go through the Schedule of Classes and WebReg tutorial
 - ❑ [How to Read the Schedule of Classes by Arts PAA](#) - 5:32
 - ❑ [How to Enroll in Courses via WebReg by Arts PAA](#) - 5:06
- ❑ Turn off all notifications on your computer and phone
- ❑ Have these available tabs in your browser to reference
 - ❑ Fall Schedule of Classes: <https://www.reg.uci.edu/perl/WebSoc>
 - ❑ GE Listings: <http://catalogue.uci.edu/informationforadmittedstudents/requirementsforabachelorsdegree/#GErequirement>
 - ❑ Arts Major Requirements: <http://catalogue.uci.edu/clairerevorschoolofthearts/>
- ❑ Have a calendar (online or paper) available to help you manage your course selections
- ❑ Know which courses you have clearances or prerequisites for
- ❑ **DO NOT LOG INTO WEBREG UNTIL YOU ARE READY TO REGISTER FOR CLASSES!**
 - ✓ If you are idle for a certain period of time while logged in, it will lock you out of the system for a while



Course Planning Tips

- ❑ Assume that your schedule will not be exactly what you want – that’s okay!
- ❑ Have other course options available – if the course is unavailable now, take it in another quarter
 - ✓ Major restrictions may prevent you from enrolling in courses. Check the grey boxes in the Schedule of Classes for more information
- ❑ Enroll in the major courses that the Academic Counselors advised you to take for the fall
 - ✓ The rest of your course selections are up to you – we do not select classes for you like your high school counselor. We can offer suggestions.
 - ✓ Tell us if you plan to double major
- ❑ Can enroll in up to 18 units today, but enrolling in 12-16 units is also great
- ❑ If a course requires a B code, you will need to email the professor before you can register
 - ✓ Don’t try to register if you don’t have a B code, as WebReg will not allow you to register for it
- ❑ If you need to audition or take a placement exam in order to register for the course and you have not done so, do not register for that course
 - ✓ WebReg will not allow you to register for it. Don’t try.

