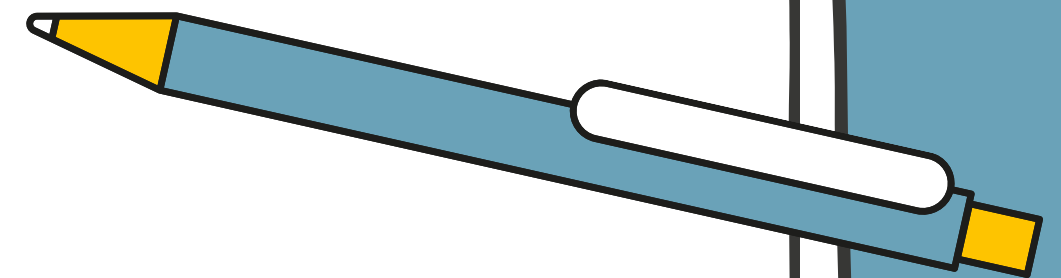
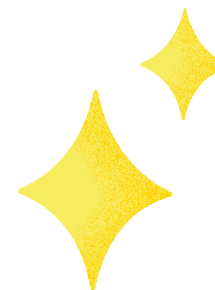
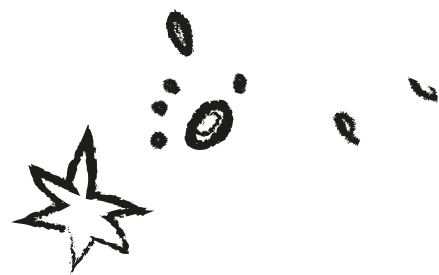


**UCI** Claire Trevor School of the Arts

# Drama Programs



# Drama Programs

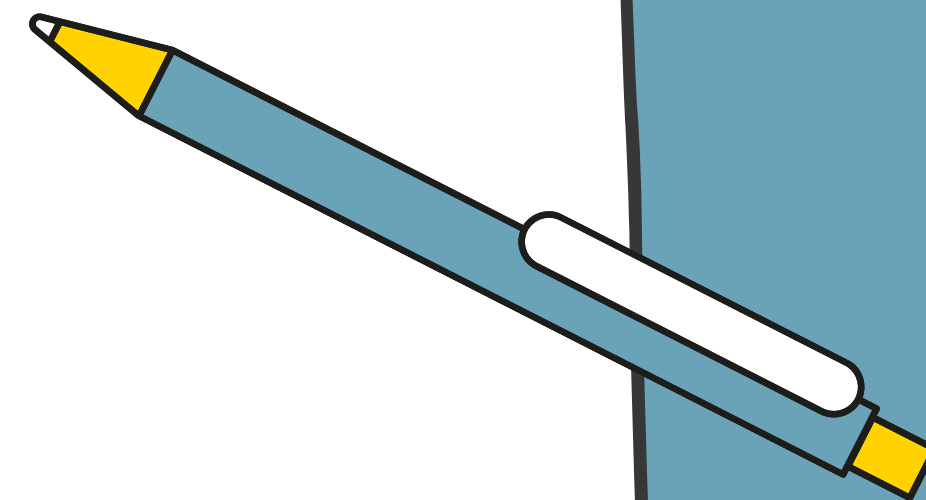
**B.A. in Drama**

**B.F.A. in Music Theatre**

**Minor in Drama**

- All students are admitted as B.A. in Drama
- Audition required for all music theatre courses and B.F.A. program
- Holistic approach to acting, music theatre, design, directing, stage management, dramatic literature/history, playwriting
- Honors in acting, music theatre, design, directing, stage management, dramatic literature/history & theory


Focus of the program is on live production.  
This may also include work in other departments like Art, Dance and Music.



# B.A. or B.F.A.



## B.A. in Drama

- Holistic approach to theatre studies
  - Flexible: Good for students who
    - Have multiple interests in theatre
    - Pursue double majors
    - Want to study abroad
  - Music Theatre classes available to all Drama majors, with the exception of 4 classes & MT Showcase
  - Normal time-to-degree
- 



## B.F.A. in Music Theatre

- Same Drama B.A. requirements w/ several additional requirements
- Required courses in MT Acting, Singing & Dance, History of American MT, Music Proficiency and NY Satellite Program
- Must complete Music Theatre Workshop, Level III (MT III) before qualifying to audition for B.F.A.
- Only 7-8 students accepted per cohort



**NOTE:** One program is not better than the other. It all depends on what you want out of your degree.



# B.A. in Drama

**18 Courses plus DRAMA 101 | 76-80 Units**

**DRAMA 10** Introduction to Theatre

*\*Must be taken in the first year; Is a prerequisite for many Drama courses*

Select **ONE** course from

**DRAMA 15** Performance Now

**DRAMA 20A** Culture in Performance

**DRAMA 20B** Culture in Performance

**DRAMA 20C** Culture in Performance

**DRAMA 30A** Acting

**DRAMA 40A-B-C** Development of Drama

*\*Series taken in the first year for transfer students*

Select **FIVE** courses from

**DRAMA 30B** Acting

**DRAMA 30C** Acting

**DRAMA 50A** Costume Design

**DRAMA 50B** Scenic Design

**DRAMA 50C** Lighting Design

**DRAMA 50D** Sound Design

**DRAMA 50E** Stage Management

*\*One course must be from DRAMA 50C, 50D, or 50E*

**DRAMA 101A-S** Theatre Production

*\*4 units must be completed during the first year of residency*

*Transfer students with sophomore standing must complete 6 units; Transfer junior or senior standing must complete 4 units*

**THREE** Dramatic Literature courses from **DRAMA 103-129** or **180**

**FOUR** Drama Electives from: **DRAMA 80, 100 –195**

*\*Excluding DRAMA 101, 198, 199*

# 4-Year Sample B.A. Course Plan

Sample course plans are for planning purposes only and are subject to change based on the student's individual academic record and curriculum updates.

<https://www.arts.uci.edu/student-affairs-undergraduate-degree-minor-requirements#Course%20Plans>

Fall		Winter		Spring	
First Year					
Drama 10 <sup>A</sup>	4 units	Drama 30 or 50 series	4 units	Drama 30 or 50 series	4 units
Drama 30A <sup>A</sup>	4 units	Writing* or GE II- III, V-VII	4 units	Writing* or GE II- III, V-VII	4 units
Writing* or GE II- III, V-VII	4 units	GE II- III, V-VII or Elective	4 units	GE II- III, V-VII or Elective	4 units
Drama 101	2 units	Drama 101	2 units	Drama 101	4 units
Total: 14 units		Total: 14 units		Total: 16 units	
Second Year					
Drama 40A <sup>A</sup>	4 units	Drama 40B <sup>A</sup>	4 units	Drama 40C <sup>A</sup>	4 units
Drama 15 <sup>A</sup> or 20 series	4 units	Drama 50 series	4 units	Drama 50 series	4 units
GE II- III, V-VII or Elective	4 units	GE II- III, V-VII or Elective	4 units	GE II- III, V-VII or Elective	4 units
GE II- III, V-VII or Elective	4 units	GE II- III, V-VII or Elective	4 units	GE II- III, V-VII or Elective	4 units
Total: 16 units		Total: 16 units		Total: 16 units	
Third Year					
Drama 50 series	4 units	Dramatic Literature	4 units	Dramatic Literature	4 units
Upper Division Drama Elective	4 units	Upper Division Drama Elective	4 units	Upper Division Drama Elective	4 units
GE II- III, V-VII or Elective	4 units	GE II- III, V-VII or Elective	4 units	GE II- III, V-VII or Elective	4 units
GE II- III, V-VII or Elective	4 units	Elective	4 units	Elective	4 units
Total: 16 units		Total: 16 units		Total: 16 units	
Fourth Year					
Dramatic Literature	4 units	Elective	4 units	Elective	4 units
Upper Division Drama Elective	4 units	Elective	4 units	Elective	4 units
Elective	4 units	Elective	4 units	Elective	4 units
Elective	4 units				
APPLY TO GRADUATE					
Total: 16 units		Total: 12 units		Total: 12 units	
^ Course only offered during that quarter and must be taken at that time					



# 2-Year Transfer Sample B.A. Course Plan

Sample course plans are for planning purposes only and are subject to change based on the student's individual academic record and curriculum updates.

<https://www.arts.uci.edu/student-affairs-undergraduate-degree-minor-requirements#Course%20Plans>

Fall		Winter		Spring	
First Year (Junior Standing)					
Drama 10^	4 units	Drama 40B^	4 units	Drama 40C^	4 units
Drama 30A^	4 units	Drama 30 or 50 series	4 units	Drama 30 or 50 series	4 units
Drama 15^ or 20 series	4 units	Upper Division Drama Elective	4 units	Drama 50 series	4 units
Drama 40A^	4 units	Drama 101	2 units	Drama 101	2 units
Total: 16 units		Total: 14 units		Total: 14 units	
Second Year (Senior Standing)					
Drama 50 series	4 units	Drama 50 series	4 units	Dramatic Literature	4 units
Dramatic Literature	4 units	Dramatic Literature	4 units	Upper Division Drama Elective	4 units
Upper Division Drama Elective	4 units	Upper Division Drama Elective	4 units	Elective	4 units
Elective	4 units	Elective	4 units		
APPLY TO GRADUATE					
Total: 16 units		Total: 16 units		Total: 12 units	
^ Course only offered during that quarter and must be taken at that time					
Assumes:					
Transferred in 105 quarter units from the California Community College (Junior Transfer)					
All GE courses completed via UC IGETC except for Upper Division Writing					
Full-time status (12 or more quarter units)					
University Requirements (ELWR and AH&I) Satisfied					
No summer coursework or Advanced Placement					
4 units of Drama 101 (Production Crew) completed in the first-year (total of 4 required for junior transfers)					
180 units (minimum) completed by graduation					

# B.F.A. in Music Theatre

31 Courses plus DRAMA 101 & NYSP | Units Vary

## Same Requirements as B.A.

### DRAMA 10

Select **ONE** course from  
**DRAMA 15, 20A, 20B , or 20C**

### DRAMA 40A-B-C Series

### DRAMA 101A-S

### DRAMA 30A-B-C

*\*To continue to Intermediate Acting, students must earn an average grade of B or better in 30A, 30B, and 30C. Must be taken in the first year.*

Select **ONE** course from  
**DRAMA 50A, 50B, 50C, 50D, or 50E**

### DRAMA 100 University Theatre

*\*Must be a musical production*

**ONE** Dramatic Literature course from: **DRAMA 103-129** or **180**

**DRAMA 136** Music Theatre Acting (*B.F.A. Only*)

**DRAMA 142** Music Theatre II

**DRAMA 143A-B-C** Music Theatre III

UCI Catalogue: <https://catalogue.uci.edu/clairetrevorschoolofthearts/departments/drama/>

# B.F.A. in Music Theatre

**31 Courses plus DRAMA 101 & NYSP | Units Vary**

<b>DRAMA 144</b>	Music Theatre IV ( <i>B.F.A. Only</i> )
<b>DRAMA 145</b>	Music Theatre Singing ( <i>B.F.A. Only</i> )
<b>DRAMA 148A-B</b>	History of American Musical Theatre
<b>DRAMA 149</b>	Music Proficiency for Actors
<b>DRAMA 176</b>	Script and Score
<b>DRAMA 177</b>	Song Repertoire (x3) ( <i>B.F.A. Only</i> )

Select **ONE** Dance Technique sequence

<b>DRAMA 182A-B</b>	Dance Technique Level I
<b>DRAMA 183A-B</b>	Dance Technique Level II

Choose **TWO** courses in Ballet  
**DANCE 30A, 30B, 30C**

Choose **ONE** course in Jazz  
**DANCE 50A, 50B, 50C**

Choose **ONE** course in Tap  
**DANCE 52A, 52B, 52C**

**NYSP Program**

**MT Website:** <https://sites.uci.edu/musictheatreuci/>



NYSP Site: <https://sites.uci.edu/musictheatreuci/new-york-satellite-program/>

# NYSP: New York Satellite Program

## Winter Quarter

**DRAMA 146** NYSP – Prep

## Spring Quarter

**DRAMA 190** NYSP – Acting

**DRAMA 191** NYSP – Dance

**DRAMA 192** NYSP – Singing

**DRAMA 193** NYSP – Performance

**DRAMA 194** NYSP – UCI Residency

This four-week long intensive in Manhattan is open to all CTSA students. Auditions are held during Welcome Week with preparation beginning with meetings in the Fall. NYSP classes begin in the Winter, and the Program heads to New York City in the Spring.

In addition to classes acting, dance, voice, casting and auditioning in New York, the NYSP students participate in new musicals written particularly for them. These new works are presented Off-Broadway while the actors are in residence in NYC and again in Irvine upon the students return to campus.

# 4-Year Sample B.F.A. Course Plan

Sample course plans are for planning purposes only and are subject to change based on the student's individual academic record and curriculum updates.

<https://www.arts.uci.edu/student-affairs-undergraduate-degree-minor-requirements#Course%20Plans>

Fall		Winter		Spring	
First Year					
Drama 10 <sup>A</sup>	4 units	Drama 30B <sup>A</sup>	4 units	Drama 30C <sup>A</sup>	4 units
Drama 15 <sup>A</sup> or 20 series	4 units	Writing* or GE II- III, V-VII	4 units	Writing* or GE II- III, V-VII	4 units
Drama 30A <sup>A</sup>	4 units	GE II- III, V-VII or Elective	4 units	GE II- III, V-VII or Elective	4 units
Drama 65 <sup>AA</sup>	2 units	Drama 142 <sup>AA</sup>	2 units	Drama 142 <sup>AA</sup>	4 units
Drama 101	2 units	Drama 101	2 units	Drama 101	4 units
Total: 16 units		Total: 16 units		Total: 20 units	
Second Year					
Drama 40A <sup>A</sup>	4 units	Drama 40B <sup>A</sup>	4 units	Drama 40C <sup>A</sup>	4 units
Drama 50 series	4 units	Drama 148AB <sup>AA</sup>	4 units	Drama 149	2 units
Drama 142 <sup>AA</sup>	4 units	Drama 143ABC <sup>AA</sup>	4 units	GE II- III, V-VII or Elective	4 units
Drama 182AB/183AB <sup>AA</sup>	4 units	Drama 182AB/183AB <sup>AA</sup>	4 units	GE II- III, V-VII or Elective	4 units
Writing* or GE II- III, V-VII	4 units	GE II- III, V-VII or Elective	4 units	Drama 100	4 units
Total: 20 units		AUDITION FOR BFA Total: 20 units		Total: 18 units	
Third Year					
Drama 143ABC <sup>AA</sup>	4 units	Drama 143ABC <sup>AA</sup>	4 units	New York Satellite Program	
Drama 145 <sup>**</sup>	1 unit	Drama 145 <sup>**</sup>	1 unit	Drama 190	4 units
Drama 148AB <sup>AA</sup>	4 units	Drama 146 <sup>**</sup>	4 units	Drama 191	4 units
GE II- III, V-VII or Elective	4 units	GE II- III, V-VII or Elective	4 units	Drama 192	4 units
Dance Technique(s)	2-4 units	GE II- III, V-VII or Elective	4 units	Drama 193	4 units
		Dance Technique	2 units	Drama 194	4 units
Total: 15-17 units		Total: 19 units		Total: 20 units	
Fourth Year					
Drama 136 <sup>**</sup>	4 units	GE II- III, V-VII or Elective	4 units	Dramatic Literature w/ UD Writing	4 units
Drama 144 <sup>**</sup>	4 units	GE II- III, V-VII or Elective	4 units	Drama 176	4 units
Drama 145 <sup>**</sup>	1 unit	GE II- III, V-VII or Elective	4 units	GE II- III, V-VII or Elective	4 units
Drama 177 <sup>**</sup>	2 units				
Dance Technique(s)	2-4 units				
APPLY TO GRADUATE Total: 13-17 units		BFA Showcase Total: 12 units		Total: 12 units	
<sup>A</sup> Course only offered during that quarter and must be taken at that time					
<sup>AA</sup> Course only offered in fall and winter quarters and can be taken in any year					
<sup>**</sup> Course only for declared BFAs and offered in fall and winter quarters and can be taken in any year					

# 3-Year Transfer Sample B.F.A. Course Plan

Sample course plans are for planning purposes only and are subject to change based on the student's individual academic record and curriculum updates.

<https://www.arts.uci.edu/student-affairs-undergraduate-degree-minor-requirements#Course%20Plans>

Fall		Winter		Spring	
First Year					
Drama 40A <sup>A</sup>	4 units	Drama 40B <sup>A</sup>	4 units	Drama 40C <sup>A</sup>	4 units
Drama 142 <sup>AA</sup>	4 units	Drama 148AB <sup>AA</sup>	4 units	Drama 149	2 units
Drama 182AB/183AB <sup>AA</sup>	4 units	Drama 142 <sup>AA</sup>	4 units	Dance Technique(s)	2-4 units
Drama 101	2 units	Drama 182AB/183AB <sup>AA</sup>	4 units	Elective	4 units
		Drama 101	2 units		
Total: 14 units		Total: 18 units		Total: 12-14 units	
Second Year					
Drama 15 <sup>A</sup> or 20 series	4 units	Drama 50 series	4 units	<i>New York Satellite Program</i>	
Drama 143ABC <sup>AA</sup>	4 units	Drama 143ABC <sup>AA</sup>	4 units	Drama 190	4 units
Drama 148AB <sup>AA</sup>	4 units	Drama 145 <sup>**</sup>	1 unit	Drama 191	4 units
Dance Technique(s)	2-4 units	Drama 146 <sup>**</sup>	4 units	Drama 192	4 units
		Dance Technique(s)	2-4 units	Drama 193	4 units
				Drama 194	4 units
<i>AUDITION FOR BFA</i>					
Total: 14-16 units		Total: 15-17 units		Total: 20 units	
Third Year					
Drama 136 <sup>**</sup>	4 units	Dramatic Literature w/ UD Writing	4 units	Drama 100	4 units
Drama 143ABC <sup>AA</sup>	4 units	Drama 145 <sup>**</sup>	1 unit	Drama 176	4 units
Drama 144 <sup>**</sup>	4 units	Elective	4 units	Elective	4 units
Drama 145 <sup>**</sup>	1 unit	Elective	4 units		
Drama 177 <sup>**</sup>	2 units				
<i>APPLY TO GRADUATE</i>		<i>BFA Showcase</i>			
Total: 17 units		Total: 13 units		Total: 12 units	

<sup>A</sup> Course only offered during that quarter and must be taken at that time

<sup>AA</sup> Course only offered in fall and winter quarters and can be taken in any year

<sup>\*\*</sup>Course only for declared BFAs and offered in fall and winter quarters and can be taken in any year

**Assumes:**

Additional courses may be required by the Music Theatre program: <https://sites.uci.edu/musictheatreuci/>

# Drama Production Auditions

- **Mega Auditions –Main Stage Productions**

- Welcome Week (Week 0) – Fall only
- Audition information: <https://drama.arts.uci.edu/auditions>

- **Director Class Project**

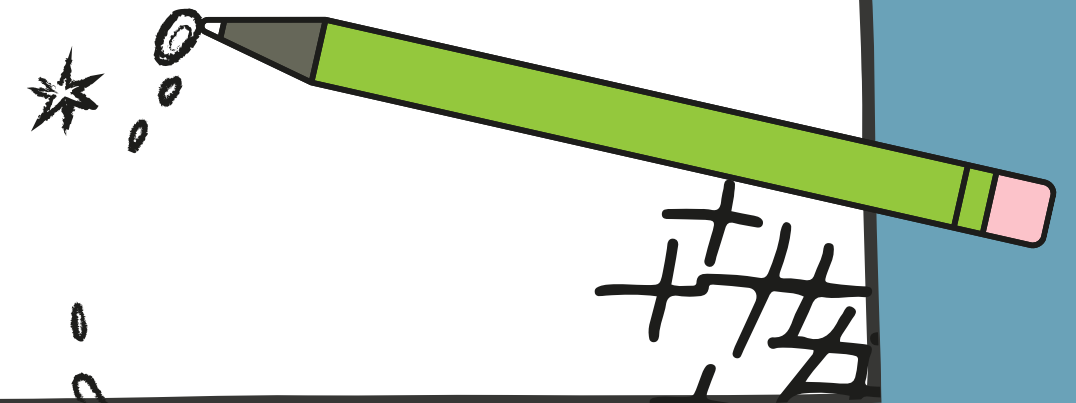
- For students who are involved as actors, directors, designers, stage managers and their assistants. M.F.A. Directors and the Head of Directing (HoD) supervise the projects
- Auditions vary per quarter – Check Callboard for more information

- **Musical Theatre (MT) Workshop and Dance Technique Auditions**

- During Welcome Week in Fall for new & continuing students; During the end of the quarter for Fall & Winter for continuing students

- **New York Satellite Program (NYSP)**

- Welcome Week (Week 0) – Fall only
- Audition information: <https://drama.arts.uci.edu/auditions>





# Drama 101: Theatre Production

- Required academic courses that provide you opportunities to supplement your educational experience, to network with others, and to support your colleagues in the production process
- Drama 101 information: <https://sites.uci.edu/callboard/drama-101-crew/>
- Sign-ups for fall during Welcome Week; For winter & spring via online form
- Students will receive assignments and "B" code to register for course
- 4 units must be completed in the first year of residency in order to audition and avoid the delinquency list