

# | Drama | Music | Dance | Art |

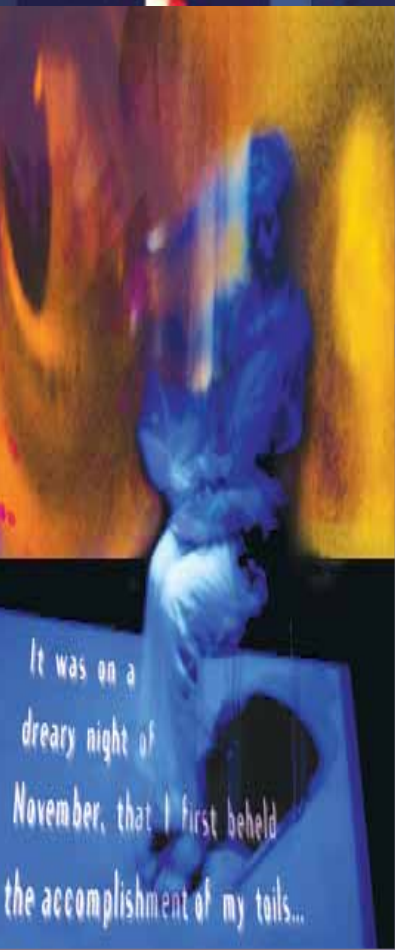
Claire Trevor School of the Arts



**UCLA** Arts

University of California, Irvine

2002 - 2003 SEASON



## Claire Trevor School of the Arts 2002-2003 Performance Season

### Get Inspired!

The arts do more than entertain... they inspire, educate and challenge our perspectives. The Claire Trevor School of the Arts proudly presents our 2002-2003 performance and exhibition season as a gift to the community for cultural enrichment and fulfillment. The year showcases the diversity and talent of our students, professional artist faculty and distinguished guests in art and technology, dance, drama, music and studio art.

### Season tickets designed to fit your budget and lifestyle!

Select one or all of our season series for Drama, UCI Symphony and Chamber Music, or create your own Sampler Series and save 20% on general admission ticket prices. Mark your selections on the order form in the center of this booklet. Our season calendar of individual events will be your guide for another sensational year of UCIArts.

### Table of Contents

ArtsWeek .....	3
Drama: On the Mainstage .....	4
Drama: On Stage 2 .....	5
Music: Chamber Series .....	6
Subscriber Information .....	7
Maps .....	8
Order Form .....	9
Sampler Series Form .....	10
Music: Symphony Orchestra ...	11
Music: Jazz Orchestra .....	12
Dance .....	13
Art .....	14
Calendar .....	15

## 2002 UCI ArtsWeek *A Celebration!*

**November 9-16**

**A**rtsWeek 2002, UCI's annual festival of the arts, invites you to a week of events that showcase the diversity and strength of our programs. This year we celebrate new beginnings, as the curtain rises on our newly renovated facilities that offer countless possibilities for learning, teaching, performance and exhibitions. The Claire Trevor School of the Arts' faculty and students are planning a celebration that is sure to delight. It includes the reopening and dedication of the Claire Trevor Theatre, which features a completely remodeled, state-of-the-art interior and dramatic open-air lobby.



Claire Trevor,  
Our Fair Lady

### **UCI Symphony Orchestra**

**Stephen Tucker, conductor**

*An evening of majestic music*

**Sat., Nov. 9, 8 pm**

Irvine Barclay Theatre

Wagner: Overture to  
*Die Meistersinger von Nürnberg*

Mahler: Symphony No. 1 in D "Titan"

\$12 general audiences

\$10 UCI faculty, staff and seniors (62+)

\$8 UCI students and children under 18

### **UCI Faculty Exhibition**

*Special ArtsWeek event*

**Sun., Nov. 10, 3-6 pm**

Gallery Talk: 4:30 pm. Discussion led by curator Jenelle Porter and selected artists

**Beall Center for Art and Technology and University Gallery**

Admission is free (see page 14 for exhibition information)

### **Claire Trevor Movie Classics**

**Tues., Nov. 12**

6:30 pm: *Key Largo*

8:45 pm: *Stagecoach*

Winifred Smith Hall

Admission is free. Reservations required. Call (949) 824-2787

### **My Fair Lady**

*Gala Benefit Performance*

*Reopening and Dedication of the Claire Trevor Theatre*

**Sat., Nov. 16, 5 pm**

Claire Trevor Theatre

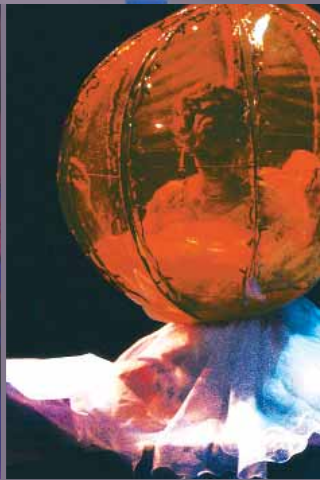
\$500 & \$250

A sparkling Hollywood-style evening to raise funds for scholarships and performance opportunities

For further information and to purchase benefit tickets call (949) 824-2011

(see page 4 for other *My Fair Lady* performance dates)





## On The Mainstage

**Nov. 15-23**  
**Claire Trevor Theatre**  
**My Fair Lady**

Presented by the Departments of  
 Drama, Dance & Music

Book and Lyrics by Alan Jay Lerner  
 Music by Frederick Lowe  
 Robert Cohen, director  
 Donald McKayle, choreographer  
 Dennis Castellano, musical director

•Fri. & Sat. eve: \$27/24/12  
 Weeknight & matinee: \$25/22/12

ArtsWeek performance Nov. 16:  
 \$500 & \$250 (see page 3)

The epitome of taste, elegance and style, *My Fair Lady* is the jewel in the American musical-comedy crown. Based on George Bernard Shaw's *Pygmalion*, the plot hinges on a bet that the famous linguist Henry Higgins can pass off the cockney flower girl Eliza Doolittle as a duchess at an embassy ball. Eliza's transformation from a guttersnipe into a proper-speaking lady succeeds beyond everyone's wildest dreams. The collaborative genius of Alan Jay Lerner and Frederick Lowe has given us "a show so perfect in concept and execution that neither changing times nor changing tastes have dimmed its lustre." — music critic Robert Harris, CBC Radio

**Jan. 23-Feb. 1**  
**Winifred Smith Hall**  
**Big Love**

by Charles Mee  
 Annie Loui, director

•Fri. & Sat. eve: \$17/15/9  
 Weeknight & matinee: \$15/14/9

Charles Mee's hilarious battle between the sexes finds 50 unwilling brides fleeing their pre-arranged marriages to 50 cousins. The sisters find sanctuary in a sunny Italian villa, but a safe haven is hard to come by with the grooms in hot pursuit. Murder, not marriage, is the sisters' new game plan as the nuptials are derailed by carnage, mayhem and flying wedding cake. A hit at the 2000 Humana Festival of New Plays, Mee's audacious update of Aeschylus' *The Suppliant Maidens* is an "MGM musical in technicolor, a circus and, believe it, a Greek tragedy." — *The New York Times*

**April 18-26**  
**Claire Trevor Theatre**  
**Lady Windermere's Fan**

by Oscar Wilde  
 J.R. Sullivan, director

•Fri. & Sat. eve: \$17/15/9  
 Weeknight & matinee: \$15/14/9

A lord, his wife, her admirer and a mysterious femme fatale converge in Oscar Wilde's delightful satire of late Victorian society's snobbery and duplicity. Surfeit with intrigue and misunderstanding, scandal and hypocrisy, this delicious comedy of manners has sharp things to say about marriage and moral judgements, surface appearances and things not always being what they seem.

•Single Ticket Price Legend:  
 \$ General audiences/UCI faculty, staff, alumni association members, seniors (62+)/UCI students & children under 18  
 Drama Production Photographer: Philip Channing



---

**May 30-June 7**  
**Claire Trevor Theatre**

## **Hair**

*An All-Undergraduate Production*

Music by Galt MacDermot

Book and Lyrics by Gerome Ragni  
and James Rado

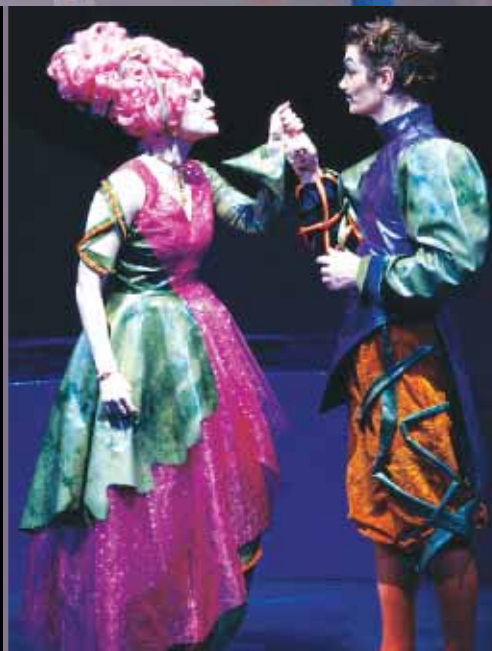
Keith Fowler, director

Janice Gudde Plastino,  
choreographer

Dennis Castellano, musical director

•\$15/12/10

**P**ace, love, freedom and happiness are never out-of-date. Billed as “the American Tribal Love-Rock Musical,” *Hair* is the immensely popular show that first flourished in the late 1960s as a counter-cultural response to the horrors of the Vietnam War. Through rich melodies, psychedelic rhythms and vigorous satire, *Hair* transmutes the turmoil and pain of its powerful social themes into a dynamic and life-affirming celebration of the generation of hippies and flower children — the Age of Aquarius! (contains nudity)



## **On Stage 2**

---

**Dec. 4-8**  
**Studio Theatre**

## **God's Country**

by Steven Dietz

Eli Simon, director

•\$10/9/8

**B**ased on actual court records, news archives and witness interviews, Steven Dietz's chilling and timely docudrama chronicles the hate crimes of white supremacists operating in the Pacific Northwest in the 1980s. (adult themes, language)

---

**Jan. 30-Feb. 8**  
**Studio Theatre**

## **The Day Maggie Blew Off Her Head**

by Amy Bridges

Teresa Pond, director

•\$10/9/8

**N**ewcomer Amy Bridges delivers a blistering dark comedy of a young woman's fatal struggle with her weight and low self-esteem which is driven by society's skewed standards for the “ideal woman.” Winner of the 1997 Edward Albee Play Lab Award. (adult themes, language)

---

**Feb. 27-March 1**  
**Claire Trevor Theatre**

## **King Lear**

by William Shakespeare

Roberto Prestigiacomo, director

•\$10/9/8

**P**ower, greed and hypocrisy tear apart the bonds of filial loyalty and love in Shakespeare's searing tragedy of an aged king who blindly entrusts his heart and kingdom to the wrong children.

---

**April 10-12**  
**Little Theatre**

## **The Caucasian Chalk Circle**

by Bertolt Brecht

Translated by Eric Bentley

Joshua Hsu, director

•\$10/9/8

**B**recht's masterpiece is a saga of compassion and justice. A simple servant girl rescues an abandoned child, only to have the natural mother return to claim the baby and its inheritance. Justice is determined when a wily judge sets a test to reveal the true mother's love.

# UCI Chamber Series

Kei Akagi, piano



Richard Savio, lute/guitar



Nohema Fernández, piano



Nina Scolnik, piano



John Schneiderman, lute/guitar



## UCI Chamber Series

### Winifred Smith Hall

Performed by UCI Artist Faculty and Distinguished Guests

All performances start at 8 pm

Festival seating: arrive early for the best seats

•\$12/10/8

Sat., Oct. 12

### In Celebration of Igor Stravinsky

On the 120<sup>th</sup> anniversary of his birth

**Haroutune Bedelian, violin**  
**Amanda Walker, clarinet**  
**Nina Scolnik, piano**  
**Lorna Griffitt, piano**  
**Frances Young Bennett, soprano**  
**H. Colin Slim, commentary**

**P**rogram includes Duo Concertante for Violin and Piano; Suite from *L'Histoire du Soldat* for Clarinet, Violin and Piano; Two Poems and Three Japanese Lyrics for High Soprano and Piano; *Le Sacre du Printemps* for Piano Duet.

Sat., Oct. 26

### An Evening of Jazz

with Pianist Kei Akagi and Friends

**P**rogram includes jazz standards and original compositions by acclaimed jazz artist Kei Akagi.

Sat., Feb. 22

### Music From the Heart

Nohema Fernández, piano

**A**n evening of piano music full of passion and emotion. The works span two centuries, from Schumann to Villa-Lobos, offering proof that emotion is not limited to time or place. The program includes works by Chopin, Schumann, Albéniz, Nin-Culmell, Lecuona, Villa-Lobos and Granados.

•Single Ticket Price Legend:  
\$ General audiences/UCI faculty, staff, alumni association members, seniors (62+)/UCI students & children under 18

Sun., March 2

### Music for Strings

**Haroutune Bedelian, violin**  
**John Scanlon, viola**  
**Margaret Parkins, cello**  
with outstanding UCI student musicians

Schubert's String Quintet in C Major, Opus 163, Mendelssohn's String Octet in E-flat Major, Opus 20

Sat., April 5

### Piano Masterworks

Nina Scolnik, piano

Haydn's Sonata in F Major, Hob.XV:23, Schubert's Sonata in B-Flat Major, Op. posth., and works by Chopin, Janáček and Dvořák

Sat., May 17

### Les Deux Amis

**Richard Savino and John Schneiderman, Guitars and Lutes**

18th- and 19th-century masterworks by Vivaldi, Roncalli, Weiss, Haydn, and Mertz



# UCIArts

---

University of California, Irvine

Select one or all of our season series for Drama, UCI Symphony and Chamber Music. OR, create your own Sampler Series by selecting four or more different events and receive a 20% discount on general admission ticket prices (See page 10).

## Subscriber Advantage

**Discount Pricing** — 20% or more off the regular price

**Priority Seating** — subscribers receive the best seats available (assigned in order received)

**Free and Easy Ticket Exchanges** — you may change performances of the same offering by returning your tickets up to 24 hours in advance of the dates on the tickets you hold, subject to availability

**Lost Ticket Insurance** — you may replace lost or stolen tickets at no charge

**Free UCIArts Quarterly** — news and insights mailed to your home each quarter

## Order Your Subscription Now!

**By Mail** send completed order form and payment to:

UCIArts Box Office  
University of California, Irvine  
Irvine, CA 92697-2775

**By Phone** call (949) UCI-ARTS (949) 824-2787

Charge it to Visa or MasterCard (\$3 service charge)

**In Person** at the UCIArts Box Office

**Season subscriptions** are available only through the UCIArts Box Office

### SINGLE TICKETS GO ON SALE MONDAY, SEPTEMBER 30.

Single tickets can be purchased at:

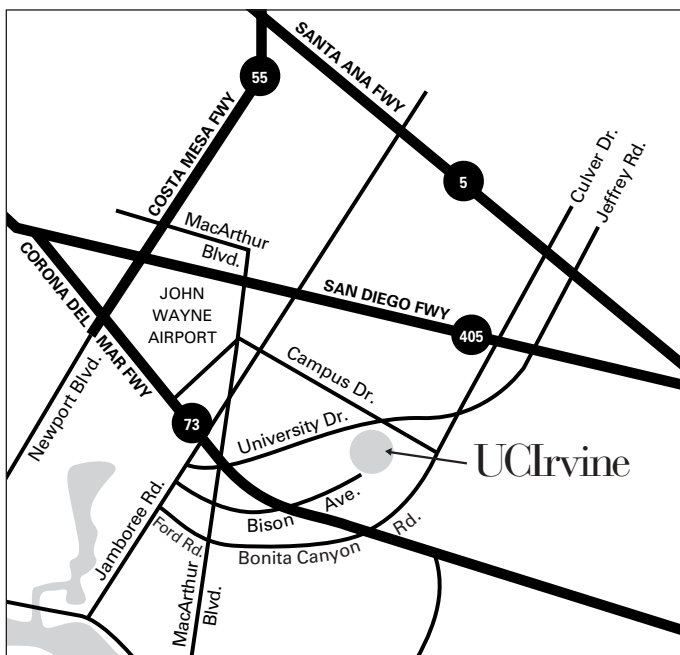
- **UCIArts Box Office**, Claire Trevor School of the Arts, 10 am-3 pm weekdays and one hour before the performance (949) 824-2787
- **Bren Events Center**, 10 am-5 pm weekdays (949) 824-5000 (for School of the Arts venues only)
- **Irvine Barclay Theatre**, 10 am-6 pm Mon.-Sat., noon-4 pm Sun. (949) 854-4646 (for IBT events only)
- **Ticketmaster** (714) 740-2000
- **Tickets are available at the door** one hour before the performance, subject to availability

### Notes

- Increased ticket prices for UCIArts events include a preservation fee.
- Student ticket prices are available only to UCI students and children under 18. I.D. must be provided as proof of eligibility.

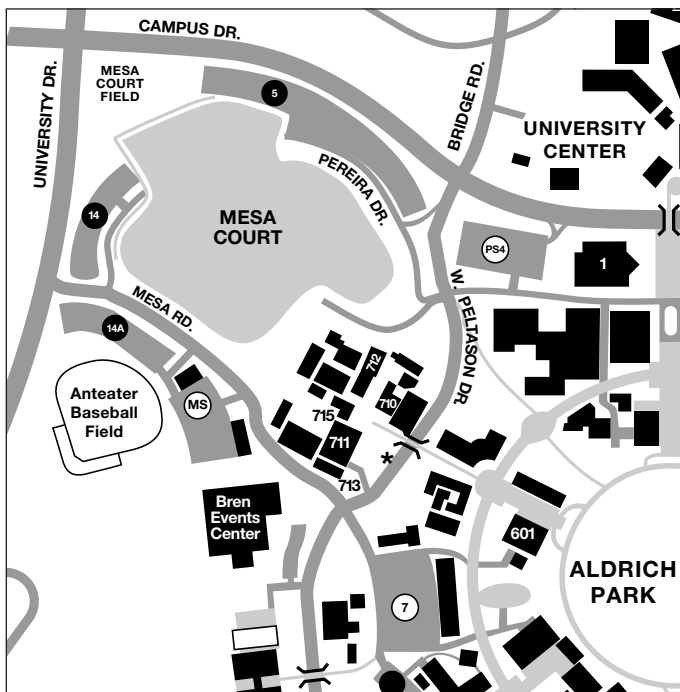
**Sorry No refunds.** Dates, times and program information listed are subject to change, cancellation or substitution without notice. Performances start promptly. Latecomers will be seated at a convenient time in the performance.

## MAPS



### Convenient Parking

- **General and handicapped parking** are available in structures (MS) on Mesa Rd. for School of the Arts venues and (PS4) for the Irvine Barclay Theatre. Parking is \$5.
- **Special Assistance Parking.** 15 minute temporary parking for patrons who need assistance to venues in the Arts Plaza is located at the bus turnout on West Peltason Dr.
- Individuals with disabilities are invited to contact the Box Office (949) 824-2787 for assistance.



Maps are not to scale. Full campus map: [www.uci.edu/campusmap/](http://www.uci.edu/campusmap/)

- 1 Irvine Barclay Theatre
- 601 Humanities - Little Theatre
- 710 Winifred Smith Hall
- 711 Claire Trevor Theatre
- 712 Beall Center for Art & Technology, University Art Gallery, CyberA Café
- 713 Studio Theatre
- 715 UCIArts Box Office
- PS4 IBT Parking Structure
- MS Mesa Arts Parking Structure
- \* Special Assistance Drop Off



## Order Form

UCIArts Box Office (949) 824-2787

Mail to: UCIArts Box Office, University of California, Irvine, CA 92697-2775

### Account Information (Please Print)

Name

Address

City

Zip

Telephone: Day

Evening

Email Address

### Payment Information (Do not mail cash)

Check enclosed (payable to UC Regents)  Credit card:  Visa  MasterCard

Account #

Exp. Date

Signature as it appears on the card

## UCIArts Subscription Series Order Form

Circle price and multiply by number of subscriptions ordered.

### Drama Mainstage — 4 events

Event	Day(s)	Date(s)				Subs Price	X	#Subs	=	Total
		Lady	Love	Fan	Hair					
Series 1	Thur:	11/21	1/23	4/24	6/5	\$52				
Series 2	Fri:	11/15	1/24	4/18	5/30	\$58				
Series 3	Sat mat:	11/23	1/25	4/19	5/31	\$52				
Series 4	Sat eve:	11/23	1/25	4/19	5/31	\$58				
Series 5*	Thur:	11/21	1/30	4/24	6/5	\$52				

\* Series 5: Theatre Guild "Evenings at the Theatre" — members are invited to pre-performance receptions and lecture/discussions with the artistic staff. Membership information: (949) 824-6614.

NOTE: Anyone may subscribe to Series 5.

### Drama Stage 2 — 4 events

		God	Maggie	Lear	Circle					
Series A	Thur:	12/5	1/30	2/27	4/10	\$32				
Series B	Fri:	12/6	1/31	2/28	4/11	\$32				
Series C	Sat eve:	12/7	2/1	3/1	4/12	\$32				
Series D	Sat mat:	12/7	2/1	3/1	4/12	\$32				

### UCI Symphony Orchestra — 5 events

Series A 1st Night:	11/9, 2/7, 3/13, 5/2, 6/6	\$40				
Series B 2nd Night:	11/9, 2/8, 3/14, 5/3, 6/7	\$40				

### UCI Chamber Music — 6 events

All events	10/12; 10/26; 2/22; 3/2; 4/5; 5/17	\$48				
------------	------------------------------------	------	--	--	--	--

\* Theatre Guild Membership (Optional \$50 minimum contribution)

Circle for the Arts Donation Call (949) 824-8750 for benefits

Subtotal UCIArts Subscription Series

Subtotal from Sampler Series (page 10)

Total Amount of Order



## 2002-2003 Sampler Series

Choose 4 or more different events and receive a 20% discount on single tickets. (Discount is available only for general admission prices.)

Event	Qty	Price	Total
Subtotal			
Subtract 20% Discount (for 4 or more events)			
<b>Total Sampler Series</b> (transfer to Order Form on page 9)			

# UCI Symphony Orchestra



Marietta Simpson, mezzo-soprano



## UCI Symphony Orchestra



**Stephen Tucker, conductor**  
 All concerts start at 8 pm  
 •\$12/10/8

### Pre-Concert Conversations

March 14 and June 6, 7pm in the Irvine Barclay Theatre

Join Maestro Tucker and guests for pre-performance discussions of the concert program.

Nov. 9  
 Irvine Barclay Theatre

### An Evening of Majestic Music

Mahler: Symphony No. 1 in D "Titan"  
 Wagner: Overture to *Die Meistersinger von Nürnberg*

Feb. 7-8  
 Claire Trevor Theatre

### 19th- and 20th-Century Masterpieces

Featured soloists:  
 UCI Honors students

Debussy: *Prelude to the Afternoon of a Faun*

Beethoven: Concerto No. 5 in E-flat for Piano and Orchestra, Op. 73  
 "Emperor" — Chinsui Chou, piano

Saint-Saëns: *Havanaise in E for Violin and Orchestra*, Op. 83  
 — Kathleen Carter, violin

Liszt: Concerto No. 5 in E-flat for Piano and Orchestra, S.124  
 — Kevin Loucks, piano

March 13-14  
 Irvine Barclay Theatre

### Instrumental Color: Impressionism and Sonic Impressions

Pre-Concert Conversation  
 March 14, 7pm

Debussy: *La Mer*  
 Zbyszynski: *Beneath a Liquid Paper Sky* (U.S. premiere)

May 2-3  
 Claire Trevor Theatre

### The New Romanticism: Beethoven and Barber

Barber: Overture to *School for Scandal*

Britten: *Serenade for Tenor, Horn and Strings*, Op. 31

Beethoven: *Symphony No. 4 in B-flat*, Op. 60

June 6-7  
 Irvine Barclay Theatre

### All Brahms

Guest artist: Marietta Simpson, mezzo-soprano

Pre-Concert Conversation  
 June 6, 7pm

Academic Festival Overture, Op. 80

Alto Rhapsody for Mezzo-Soprano, Orchestra and Chorus, Op. 53

Symphony No. 2 in D, Op. 73

•Single Ticket Price Legend:  
 \$ General audiences/UCI faculty, staff, alumni association members, seniors (62+)/UCI students & children under 18  
 Photographer: Tavo Olmos

# UCI Jazz Orchestra



Charles Owens, conductor

Spanky Wilson, jazz singer

Bobby Rodriguez, latin jazz



Chester Whitmore, dancer



## UCI Jazz Orchestra

Charles Owens, conductor

All concerts start at 8 pm

•\$12/10/8

•Single Ticket Price Legend:

\$ General audiences/UCI faculty, staff, alumni association members, seniors (62+)/UCI students & children under 18

Sat., Dec. 7  
Claire Trevor Theatre

### A Night at the Cotton Club

Guest Artists: Jazz singer Spanky Wilson and the Chester Whitmore Dancers

Sat., March 15  
Claire Trevor Theatre

### Salsa Night

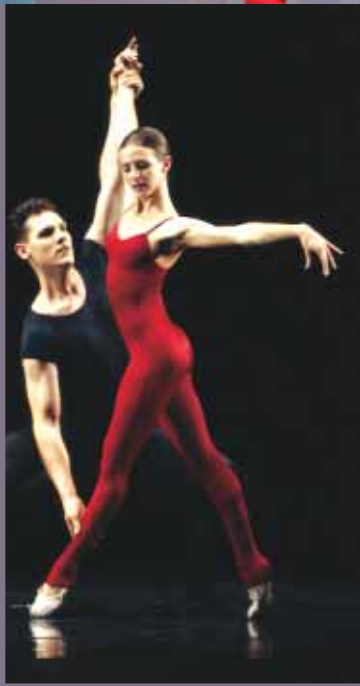
Guest Artists: Bobby Rodriguez and the Latin Jazz Ensemble

Wed., June 4  
Irvine Barclay Theatre

### All That Jazz

Guest Artists: Ernie Andrews, jazz and blues vocalist

# Dance



## Dance

**Dec. 5-7**  
**Winifred Smith Hall**  
**New Slate**

New works by UCI graduate choreographers  
•\$11/10/9

•Single Ticket Price Legend:  
\$ General audiences/UCI faculty, staff, alumni association members, seniors (62+)/UCI students & children under 18

Dance Production Photographer: Philip Channing

**Feb. 20-22**  
**Irvine Barclay Theatre**  
**Dance Visions**

**D**ance Visions 2003 presents works by UCI's internationally acclaimed artist faculty. Program highlights include Donald McKayle's *Nocturnes*, and new works by David Allan, Lisa Naugle and Eloy Barragan.

•Fri. & Sat. eve: \$18/17/10  
Thur. & matinee: \$15/14/10

**April 24-26**  
**Winifred Smith Hall**  
**Dance Escape**

New works by UCI graduate choreographers  
•\$11/10/9

**May 15-17**  
**Little Theatre**  
**Physical Graffiti**

Original works by UCI undergraduate choreographers  
•\$10/9/8



Roman Forum Project

Reading Frankenstein

## University Art Gallery

Hours: Tues.-Sun., noon-5 pm,  
and Thur., noon-8 pm

Admission is free

Information: (949) 824-3508

Titles and dates are subject to change

Intermediate Photography  
presents

## More Photos of Buildings and Food

Sept. 27-Oct. 11. Opening

Reception: Tues., Oct. 1, 6-8 pm

## UCI Faculty Exhibition

Works by UCI's  
internationally noted  
faculty in Studio Art

Oct. 23-Nov. 20. Opening

Reception: Tues., Oct. 22, 6-8 pm

Special ArtsWeek Event:

Sun., Nov. 10, 3-6 pm

4:30 pm: Talk by curator Jenelle  
Porter and selected artists

(see page 3 for ArtsWeek information)

## Studio Art Student Exhibitions

Call (949) 824-3508 for dates  
and information

## Beall Center for Art and Technology

Admission is free

Information: (949) 824-6206

Titles and dates are subject to change

For additional information visit

<http://beallcenter.uci.edu>

## ID/entity:

### Portraits in the 21st Century

Jan. 7-26. Hours: Tues.-Sun.,  
noon-5 pm; Thur. noon-8 pm

Originating at MIT's Media Lab  
and curated by Judith Donath,  
the *ID/entity* projects comprise an  
exhibit focused on technology's effect  
on the nature of identity in the 21st  
century and the conventions of  
portraiture.

## The Roman Forum Project:

### An Exploration of the American Political Spectacle

Created by Antoinette LaFarge  
Robert Allen

Please call (949) 824-6206 for  
information and reservations. Dates  
and times to be announced.

This ensemble work incorporates  
commedia dell'arte, classical  
Greek theatrical traditions and Internet  
technologies to critique the prolonged  
crisis in American politics, and how we  
place America in the world.

## Reading Frankenstein: An Immersive Theatre Experience

Created by Annie Loui  
Antoinette LaFarge  
Dr. James Fallon

Please call (949) 824-6206 for  
information and reservations. Dates  
and times to be announced.

Staged as a work-in-progress last  
spring, the Beall Center will  
present a full production of the inter-  
active performance piece, *Reading  
Frankenstein*. Using layered digital  
projections, brain imaging and a virtual  
monster interacting with a live human  
actor, the production examines the ethical  
repercussions of scientific research  
from the monster's point of view.

## Look Again: Digital Photography by ArtsBridge Children

June 9-13. Hours: Tues.-Sun.,  
noon-5 pm; Thur., noon-8 pm

An exhibition of digital  
photography by K-12  
ArtsBridge students.



# Calendar

## 2002-2003 CALENDAR

All performances start at 8 pm unless otherwise noted. Call UCI-ARTS (949) 824-2787 for information regarding events listed in the calendar which are not covered in the season brochure. Single tickets for all events go on sale **Monday, September 30.**

MONTH	DATE	DAY	EVENT NAME	VENUE
September	27-Oct 11		More Photos...*	UAG•
October	12	Sat	In Celebration of Igor Stravinsky	WSH
	23-Nov 20		UCI Faculty Exhibition*	UAG/BC•
	23	Wed	Gassman Electronic Music Event*	WSH
	26	Sat	Kei Akagi: An Evening of Jazz	WSH
November	2	Sat	Choir Concert*	WSH
	9	Sat	UCI Symphony Orchestra	IBT
	10	Sun	UCI Faculty Exhibition*	
			ArtsWeek Event (3-6 pm, 4:30 pm talk)	UAG/BC•
	12	Tues	Claire Trevor Movies (6:30 & 8:45 pm)**	WSH
	15 & 17	Fri & Sun	My Fair Lady (Sun, 2 pm)	CT
	16	Sat	My Fair Lady ArtsWeek Perf. (5 pm)	CT
20-23	Wed-Sat	My Fair Lady (Sat, 2 & 8 pm)	CT	
December	4-8	Wed-Sun	God's Country (Sat, 2 & 8 pm, Sun, 2 pm)	ST
	5-7	Thur-Sat	New Slate (Sat, 2 & 8 pm)	WSH
	7	Sat	UCI Jazz Orchestra	CT
January	7-26		ID/entity: Portraits in the 21st Century*	BC•
	23-25	Thur-Sat	Big Love (Sat, 2 & 8 pm)	WSH
	30-Feb 1	Thur-Sat	Big Love (Sat, 2 & 8 pm)	WSH
	30-Feb 1	Thur-Sat	The Day Maggie... (Sat, 2 & 8 pm)	ST
February	6-8	Thur-Sat	The Day Maggie... (Sat, 2 & 8 pm)	ST
	7-8	Fri-Sat	UCI Symphony Orchestra	CT
	14	Fri	Valentines Concert	WSH
	20-22	Thur-Sat	UCI Dance Visions (Sat, 2 & 8 pm)	IBT
	22	Sat	Nohema Fernández, piano	WSH
	27-Mar 1	Thur-Sat	King Lear (Sat, 2 & 8 pm)	CT
March	1	Sat	Choir Concert*	WSH
	2	Sun	Haroutune Bedelian et al	WSH
	7-8	Fri-Sat	Opera Workshop	WSH
	9	Sun	UCI Chamber Winds*	WSH
	10	Mon	UCI Percussion Ensemble*	WSH
	13-14	Thur-Fri	UCI Symphony Orchestra (Fri, 7 pm pre-concert talk)	IBT
	15	Sat	UCI Jazz Orchestra	CT
April	5	Sat	Nina Scolnik, piano	WSH
	10-12	Thur-Sat	Caucasian Chalk Circle (Sat, 2 & 8 pm)	LT
	18-19	Fri-Sat	Lady Windermere's Fan (Sat, 2 & 8 pm)	CT
	23-26	Wed-Sat	Lady Windermere's Fan (Sat, 2 & 8 pm)	CT
	24-26	Thur-Sat	Dance Escape (Sat, 2 & 8 pm)	WSH
May	2-3	Fri-Sat	UCI Symphony Orchestra	CT
	4	Sun	Honors Concert (2 pm)	WSH
	15-17	Thur-Sat	Physical Graffiti (Sat, 2 & 8 pm)	LT
	17	Sat	Les Deux Amis	WSH
	30-31	Fri-Sat	Opera Workshop	WSH
	30-June 1	Fri-Sun	Hair (Sun, 2 pm)	CT
June	1	Sun	UCI Chamber Winds*	WSH
	2	Mon	UCI Percussion Ensemble*	WSH
	4-7	Wed-Sat	Hair (Sat, 2 & 8 pm)	CT
	4	Wed	UCI Jazz Orchestra	IBT
	6-7	Fri-Sat	UCI Symphony Orchestra (Fri, 7 pm pre-concert talk)	IBT
	7	Sat	Choir Concert*	WSH
	9-13		Look Again: Digital Photography*	BC•

\*Free Event (No tickets or reservations are necessary.) \*\*Free; reservation required.

• Call (949) 824-6206 for gallery hours

Venues: **CT**—Claire Trevor Theatre; **WSH**—Winifred Smith Hall; **LT**—Little Theatre; **ST**—Studio Theatre; **UAG/BC**—University Arts Gallery/Beall Center for Art and Technology; **IBT**—Irvine Barclay Theatre



# Drama | Music | Dance | Art |

University of California, Irvine  
Claire Trevor School of the Arts  
300 Arts  
Irvine, CA 92697-2775

18

NonProfit Org.  
U.S. Postage  
**PAID**  
Santa Ana, CA  
Permit No. 1106

# UCLA Arts

University of California, Irvine