

Reimagining Creativity for the 21st Century!

UCI Claire Trevor School of the Arts

[CTSA Website](#) | [Art](#) | [Dance](#) | [Drama](#) | [Music](#) | [UAG](#) | [Beall Center](#) | [Arts Outreach](#)



Letter from the Dean

We're delighted to update you on the most recent CTSA accomplishments, awards, and activities. This brief newsletter is designed to remind you of upcoming opportunities you might find interesting, as well as a short selection of the kinds of recognition the remarkable CTSA faculty are receiving on campus, regionally, and around the world.

Our goal, of course, is to share some of our excitement at what's happening in CTSA with you, as we move toward making the Arts Village a place in which you can experience the most interesting and provocative artwork in the region—and, of course, share a bit of time with us.

We have ambitious plans to make exciting changes to the Village itself (stay tuned!), and to bring our activities and the arts in general to the UCI campus and beyond.

Please let us know if there's anything you'd like to be informed about and that we haven't included here, and of course let me know if you have any suggestions for establishing a more dynamic and exciting relationship with you.

Thanks so much for your involvement with and commitment to CTSA—we're at the dawn of a very exciting time!

Best regards,

Stephen Barker, Ph.D.
Interim Dean, Claire Trevor School of the Arts

2015-16 Season!

View our entire
[Season Brochure](#).

[Shop Shows](#)

In This Issue:

[School News](#)

[Awards and Grants](#)

[Faculty News](#)

[Alumni News](#)

[Upcoming Events](#)

School News

The Claire Trevor School of the Arts (CTSA) at the University of California, Irvine launched a new Minor in Digital Filmmaking. The new program will give students across campus the skills to create sophisticated time-based media projects and learn expertise in production. The program boasts a hybrid of traditional and creative approaches with emphasis on the production of new works for delivery online. With the Minor, Undergraduate students will have the opportunity to produce digital film works with content that contributes to the future of film as an art form. [READ MORE](#)

Awards and Grants

Assistant Professor of Art Litia Perta was named 2015-2016 UCI Hellman Fellows. Perta's two-part research project, Tidal Kinships, explores the relationship between art and art criticism. The first part, Writing Bodies, begins

the fall program of the Elizabeth Foundation for the Arts in New York City. The second part, *Just Speak Nearby: The Politics & Practice of Art Writing*, will bring together artists, scholars, curators and writers on the UCI campus. Read the full [UCI News Article](#).

Professor of Music David Brodbeck's *Defining Deutschtum: Political Ideology, German Identity, and Music-Critical Discourse in Liberal Vienna* (Oxford University Press, 2014), which the *Times Literary Supplement* (London) has called "an impressive work of scholarship that reconstructs not only a musical but also a political and cultural history," was recently given the Virgil Thomson Award for Outstanding Music Criticism in the Concert Field, by the ASCAP Foundation. [LINK](#)



Ko Umezaki

Faculty News

Associate Professor of Music Amy Bauer delivered two papers at the International Biennial Conference on Music Since 1900 at the University of Glasgow. For more information click on the [LINK](#). Professor Bauer also received a grant to work at the Paul Sacher Stiftung in Basel, Switzerland for the fall quarter, 2015.

Associate Professor of Music Kojiro Umezaki's ensemble, Silk Road Ensemble, is the subject of a documentary film which premiered at the Toronto International Film Festival. The film was Directed by Morgan Neville who won an Academy Award for *20 Feet From Stardom*. For more information click on the [LINK](#).

Professor of Music Annie Bosler spoke at the May 2015 TEDxUCIrvine Conference. In the talk entitled, *Elissa's Song: The Power of Exercising Your Face*, Annie shares her journey of helping a young girl recover her ability to play the french horn after a traumatic face injury. Watch the entire talk [HERE](#).

American Alchemy, by Professor of Art Joe Lewis, will be on display at the Newport Beach Public Library November 2 - December 4, 2015. [LINK](#)

[Read All Faculty News](#)



Annie Bosler



Noritaka Minami (MFA '11)

Alumni News

Jonathan Minei (BM '00) was appointed full-time Professor and Director of the Guitar Program at El Camino College in Torrance, California.

Kevin Jellison (BM '15) has been hired as a part-time Professor of Guitar at Irvine Valley College, beginning this fall.

Chigago Noritaka Minami (MFA '11) has been appointed Assistant Professor at Loyola University Chicago, effective August 2015. Since graduating from UCI, he has taught at Harvard, Wellesley, School of the Museum of Fine Arts Boston, and UC Berkeley. He was a recipient of the Graham Foundation for Advanced Studies in the Fine Arts, and has a forthcoming book entitled *1972*.

Matt Lipps (MFA '04) was commissioned by the New York Times Magazine to create the cover artwork for its July 2015 issue.



Matt Lipps (MFA '04)



Allison Case (Drama '05)



Man of La Mancha



Wind Ensemble



Monthly Guest Artist Series



Music Showcase Concert

Brett Doar (MFA '09) was named by Adweek as 10 Visual Artists Who Are Changing the Way We See Advertising, and the World. The list includes other famous visual artists such as Annie Leibovitz, Chris Milk, and Rama Allen. For more information click on the [LINK](#).

Laura D'Andre (BA '07) stars as Sheila in Hair at the Sacramento Music Circus. The production is musically directed by Senior Lecturer of Drama Dennis Castellano

Allison Case (Drama '05) returned to Broadway starring as Miss Honey in the hit musical, Matilda. For more information click the [LINK](#).

Conor Thompson (MFA '16) had a solo show, Head Over Heels, at Greenpoint Terminal Gallery in Brooklyn, NY. For more information click on the [LINK](#).

[Read All Alumni News](#) | [Email Your News](#)

Join Us

[Man of La Mancha](#)

November 14 – 22, 2015

Irvine Barclay Theatre

Based on The Adventures of Don Quixote by Miguel de Cervantes y Saavedra, Man of La Mancha is a comic tragedy of mankind's struggle to better both himself and the world in which he lives; the score is a musical delight, and contains one of the most notable moments in musical theatre as Don Quixote relates his personal credo in "The Impossible Dream."

[Buy Tickets](#)

*

[UCI Wind Ensemble](#)

November 16, 2015

8:00 pm

Winifred Smith Hall

The UCI Wind Ensemble, under the direction of Kevin McKeown, performs both traditional and contemporary works written specifically for the wind band genre.

Free admission. Public is welcome.

*

[Monthly Guest Artist Series](#)

John Clifford - Talk and video presentation

November 17, 2015

5:30 pm

PS1100

Balanchine, history, choreographic process and more. Videos will be presented in conjunction with the talk. A question/answer session will follow.

Free admission. Public is welcome.

*

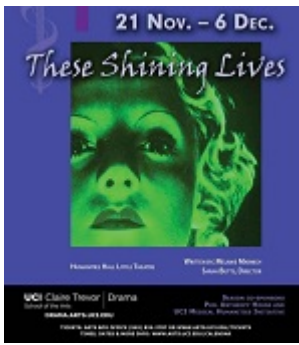
[Music Showcase Concert](#)

November 18, 2015

12:00 pm

Winifred Smith Hall

Experience the culmination of work throughout the term. This concert features outstanding performers from various disciplines in the Department of Music.



These Shining Live

Free admission. Public is welcome.

*

[UCI Jazz Orchestra Concert](#)

November 18, 2015

8:00 pm

Winifred Smith Hall

Join the UCI Jazz Orchestra for an evening of the warm and exciting sounds of large-ensemble jazz music, including the classic repertoire of the big band era.

Free admission. Public is welcome.

*

[These Shining Lives](#)

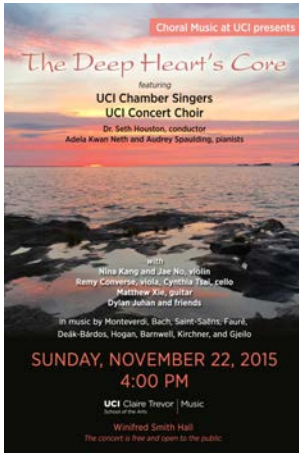
November 21 – December 6, 2015

Little Theatre

Catherine Donohue and her friends have loving families and good jobs painting glow-in-the-dark watch faces at Chicago's Radium Dial Company, and the 1920s seem full of promise. Tragedy comes when Catherine and her colleagues begin falling ill, and discover that the job they love has betrayed them. This is a story of survival in its most transcendent sense.



*



Choral Music at UCI

[Choral Music at UCI - The Deep Heart's Core](#)

November 22, 2015

4:00 pm

Winifred Smith Hall

UCI Chamber Singers and Concert Choir present their inaugural concert under the direction of Dr. Seth Houston, newly appointed director of choral activities.

The program will feature a selection of sacred and secular works by Claudio Monteverdi, J. S. Bach, Camille Saint-Saëns, György Deák-Bardos, Ysaye Barnwell, Craig Hella Johnson, and Shawn Kirchner—composer in residence with the Los Angeles Master Chorale—culminating in Ola Gjeilo's mesmerizing work for choir, piano, and guitar, *The Lake Isle*.

Free admission. Public is welcome.

Box Office / Ticket Sales Information
(949) 824-2787 | artstix@uci.edu

How to Buy

Online: www.arts.uci.edu/tickets (\$3 flat service fee)

Phone: (949) 824-2787 (\$3 flat service fee; Monday & Tuesday, 10am-5pm; Wednesday - Friday, 12-4pm)

Window: (Monday & Tuesday, 10am-5pm; Wednesday - Friday, 12-4pm)

Discounted Parking

Secure \$7 pre-paid parking permits (vs. \$10-\$15) when ordering tickets at least 14 days in advance! The option is available online, by phone or in person. Some events do not qualify. For additional information, please call the Arts Box Office at (949) 824-2787 or email artstix@uci.edu.

Shuttle Service / Accessible Drop-Off Information

We will be providing complimentary shuttle service for our disabled guests, or those with mobility issues, from the Mesa Parking Structure to most of the shows throughout the season. Shuttle service will begin one hour before show-time and will meet patrons on level two (Mesa Road street level) of the Mesa Parking Structure, by the elevator. Advance notice is appreciated, but not required. For a list of supported shows and parking/drop-off tips, visit www.arts.uci.edu/shuttle. For additional information, please call the Arts Box Office at (949) 824-2787 or email artstix@uci.edu.





Main Office: 949-824-4339
Box Office: 949-824-2787
Email: artsinfo@uci.edu

*To view a map
and parking directions,
please [click here](#).*

Claire Trevor School of the Arts
UC Irvine 4000 Mesa Rd.
Irvine, CA 92697-2775