



## A Fine August Play at UCI

**UCI AUDIENCES WILL EXPERIENCE THE VISION** of one of the country's most celebrated playwrights when the Drama Department stages August Wilson's *Seven Guitars*. Directed by Eli Simon, associate professor of drama, the Mainstage production runs from Jan. 28-Feb. 5 at the Claire Trevor Theatre.



"This is the first Wilson play to be produced by UCI and the premiere of *Seven Guitars* in Orange County," says Simon, who notes that "many consider Wilson to be the greatest living American playwright."

Wilson's acclaimed drama, set in 1948 in Pittsburgh's Hill District, follows a small group of

friends who gather after the death of Floyd "Schoolboy" Barton, a local blues guitarist on the edge of stardom. *Guitars* is the sixth chapter in Wilson's revelatory theatrical series (including *Fences* and *The Piano Lesson*, both Pulitzer Prize-winners) exploring the African-American experience.

*Seven Guitars* is told in flashbacks as we uncover the life of Barton, a ladies' man who is broke and in jail when a blues recording he made months before becomes an unexpected hit. Barton's journey

involves trying to get back with the woman he loves and finding a place among Chicago's blues greats. Those that circle around Barton – including the mysterious Hedley and provocative Ruby – complete the puzzle.

The play has charmed many critics, including Vincent Canby of the *New York Times*. "Here's a play whose epic proportions and abundant spirit remind us of what the American theater once was and still is when the muses can be heard through the din," he wrote when the drama premiered on Broadway in 1996.

Wilson's writing often draws on his own days growing up in Pittsburgh's inner-city during the '50s. While soaking up the black culture around him, Wilson began to build the foundation for the insightful dramas that would come much later. He also studied black writers, spending much of his time in the public library. Wilson credits the works of Ralph Ellison, Richard Wright and Langston Hughes, among others, as helping to form his literary vision.

He worked at various odd jobs during his teens and twenties, but always found time to write. His breakthrough came in 1982 when *Ma Rainey's Black Bottom* was accepted for a workshop production at the Eugene O'Neill Playwrights Conference in Waterford, CT and went on to be produced at playhouses across the country. Wilson was soon recognized as one of the leading theatrical voices of his generation. *Continued Page 5*



Costume rendering for *Seven Guitars* created by student designer Nicole Korzenik.

## Maya Lin Joins Celebration for Arts Plaza

**A GROUNDBREAKING CELEBRATION** for the new high-tech UCI Arts Plaza drew almost 150 guests, among them the project's celebrated designer, Maya Lin.

"Imagine entering a garden of perception, where all the senses are tapped, from sight, smell, taste, touch and hearing," Lin told the crowd that gathered at the Claire Trevor School of the Arts for the mid-November event.

UCI Chancellor Ralph J. Cicerone noted that "the plaza will be a tribute to all the traditional art forms. At the same time, it unites technology at the Beall Center, and opens the door for new creative art forms that stimulate and stretch the imagination" in the ways that reflect the talents of our students and faculty.

Lin, creator of the Vietnam Veterans Memorial in Washington, D.C., was



commissioned in 2000 to transform the School's bland concrete courtyard. Her collaborator on the 30,000 square-foot project is Pamela Burton, a Santa Monica landscape architect.

The plaza will have a 200-seat outdoor amphitheater, special effects lighting along pathways, and an area for study and reflection highlighted by one of Lin's signature "water table" fountains flanked by "whispering" benches playing music, poetry and other sounds. There will also be Internet-linked video screens displaying images from around the world.

*Continued Page 4*

From left: Maya Lin, Dean Nohema Fernández and Pamela Burton at Arts Plaza celebration

### Inside

- Dean's Message . . . . . Page 2
- In the Spotlight . . . . . Page 2
- Development Directions . . . Page 4
- Art Du Jour at CyberA . . . . Page 5
- Enjoy! (Winter Calendar) . . . Page 6

University of California, Irvine  
 Claire Trevor School of the Arts  
 300 Arts  
 Irvine, CA 92697-2775  
 18

Non-Profit Org.  
 U.S. Postage  
 P A I D  
 Santa Ana, CA  
 Permit No. 1106

"The simple act that an artist makes – a sketch upon a piece of paper"  
 Maya Lin



## From the Dean's Desk

Dear Friends,

Did you know that globalization and new technologies have a profound effect on the creative professions? Transportation and ease of global communication dramatically facilitate the exchange of ideas and foster cultural transformations. Immigration and travel do change artistic sensibilities and cultural practice. In addition, the boundaries separating the traditional domains of artistic activity have changed dramatically and artists are frequently involved in multimedia shows and performances. As a result, artists need to develop new skills, particularly those related to new technologies. For example, musicians frequently use software to produce works in their home studios and new technologies to distribute their work through DVDs and CDs. Furthermore, today's career realities demand that artists acquire skills in areas such as writing, speaking, fund raising and art project marketing.

What are we doing at The Claire Trevor School of the Arts to adequately prepare the artists of the future for these challenges? Programs focused on technology include the Digital Arts Minor and the Arts Computation Engineering (ACE) graduate program, as well as specific programs in electronic music, computer gaming studies, digital lighting techniques and videodance/motion capture.

Mainstreamed technological training can be found in website development classes, dance and acting for the camera, and computer art, among others.

We also place a high value on practical experience, global dialogue and community

engagement. Students participate annually in Drama's Music Theatre New York Satellite Program or Dance's exchange program with the National Conservatory in Paris. During the academic year, we host approximately forty visiting artists and master teachers from around the world. Many of our students participate in summer professional development programs across the country and abroad. Closer to home, we have partnerships with the Orange County High School for the Arts and Osher Lifelong Learning Institute. Also, Studio Art joins with the Pasadena Art Center, Cal Arts and other distinguished art programs to present group student shows; and ArtsBridge gives our students opportunities for community service in area K-12 classrooms while receiving training in their disciplines.

The future is now...and our students are ready!



Nohema Fernández  
Dean



## In the Spotlight

### Faculty

**BOB BOROSS**, assistant professor of dance, was invited to teach and choreograph at the Third International Jazz Dance Forum (Paris, France, Oct. 23-29).

Baritone **ROBIN BUCK**, co-director of vocal studies, performed in *First Nights—Mahler First* with the Los Angeles Philharmonic conducted by James Conlon at Walt Disney Concert Hall (Los Angeles, Oct. 22).

Dean **NOHEMA FERNÁNDEZ**'s latest recording, *Serenata Cubana*, was released on Centaur Records (#CRC 2582) in Dec. 2004. The recording is a retrospective of Cuban piano music from 1800 to 1957. The CD's cover design is by Kris Elftmann, chairman of the Dean's Leadership Council.

Staged readings of *Galileo in America*, a new performance work-in-progress written by **ANTOINETTE LAFARGE**, associate professor of studio art, were presented in October at the Goethe Institute (Los Angeles) and the Villa Aurora (Pacific Palisades). *Galileo in America* draws together multiple storylines, focusing on Bertolt Brecht's collaboration with film actor Charles Laughton on an American version of Brecht's play about Galileo.

In fall 2004, **SIMON LEUNG**, assistant professor of studio art, directed the world premiere of the opera, *Hell*, at St. Marks Church in New York City. The production is also planned for UCLA's Hammer Museum (Los Angeles), the Yerba Buena Center for the Arts (San Francisco), and the Conaculta Centro Cultural Tijuana (Mexico).



A staged reading of Antoinette LaFarge's *Galileo in America*.



Studio Art Professor **CATHERINE LORD**'s book, *The Summer of Her Baldness: A Cancer Improvisation*, is "a document of the involuntary performance piece occasioned by the diagnosis of breast cancer." The book offers an unconventional look at the societal space occupied by the seriously ill (University of Texas Press, May 2004).

Drama Associate Professor **ANNIE LOUI**'s *Absence/Presence*, a dance-video created in collaboration with intermedia artist Mark Zaki, was presented in the *Not Still Art Festival* (New York City) on Oct. 2. It was also shown in the *Bits and Pieces* Digital Exhibition at the UC Riverside's California Museum of Photography (May-July, 2004). *Still Life*, a second dance/animation/video collaboration with Zaki, premiered Nov. 3 at the International Computer Music Conference (University of Miami, Coral Gables, FL).

Recent faculty solo exhibitions include **DANIEL J. MARTINEZ**, professor of studio art, at The Project (New York City, Sept. 3-Oct. 2), and **YONG SOON MIN**, chair of studio art, at Ssamziespace Galleries (Seoul, South Korea, Aug. 13-Sept. 18).



Letting it loose in Bryan Reynolds' *Unbuckled*

**TOM RUZIKA**, lecturer in drama, recently completed lighting designs for the national tour of *Peter Pan*, starring Cathy Rigby, *Tuesdays with Morrie* for the Laguna Playhouse and the San Jose Repertory Theatre, and *4 Guys Named Jose* for the International City Theatre. His recent commissions include lighting designs for the Hard Rock Hotel and Casino in Hollywood, FL, and for the Hard Rock Las Vegas "Body English Ultra Lounge" nightclub.

In summer 2004, **BRYAN REYNOLDS**, associate professor of drama, and **JEFF VOWELL**, drama doctoral student, directed *Unbuckled* (written by Reynolds), which toured international theater festivals in the Romanian cities of Sibiu, Cluj, Tirgu Mures and Sfintu Gheorghe. The production's artistic staff included Drama Professor **DOUGLAS-SCOTT GOHEEN**, scenery designer, and graduate students **ELISHA GRIEGO**, lighting designer, and **STACY HAGGIN**, stage manager. After the successful tour, *Unbuckled* was staged in Los Angeles by the same team.



Hard Rock Las Vegas "Body English Ultra Lounge" nightclub



**CONNIE SAMARAS**, professor of studio art, was awarded a 2004-05 National Science Foundation Artists and Writers Polar Grant. In November, she traveled to Antarctica to photograph the new station being built at the South Pole as well as pre-existing structures. Samaras will lecture on her South Pole project and other recent photographic series at the UCLA Hammer Museum in April 2005.

In August, pianist **NINA SCOLNIK**, lecturer in music, joined the faculty of the Ameropa International Chamber Music Festival and performed at the Rudolfinum in Prague, Czech Republic, with principals of the Royal Concertgebouw Orchestra of Amsterdam.



Nina Scolnik

## Students

Studio Art graduate student **DAVE BURNS** produced *Patriotic*, a performance video shot at the Hollywood Bowl in Los Angeles. Described as "a meditation on intimacy, dependency and control," the video premiered at the *Alt/Sil* exhibit at the Silver Lake Film Festival (Sept. 2004) and will be screened at the *Log Cabin* group show at New York City's Artists Space (Jan. 2005).

**JASON KELLER**, graduate student in Studio Art, is among the artists selected to show their work in the Laguna Art Museum's *The OsCene: Contemporary Art and Culture in OC*, a survey exhibition of Orange County artists working in all media (Nov. 7, 2004-Feb. 27, 2005). Keller's work, titled *Rubber Realism*, was funded by a SOTA Graduate Research Award.

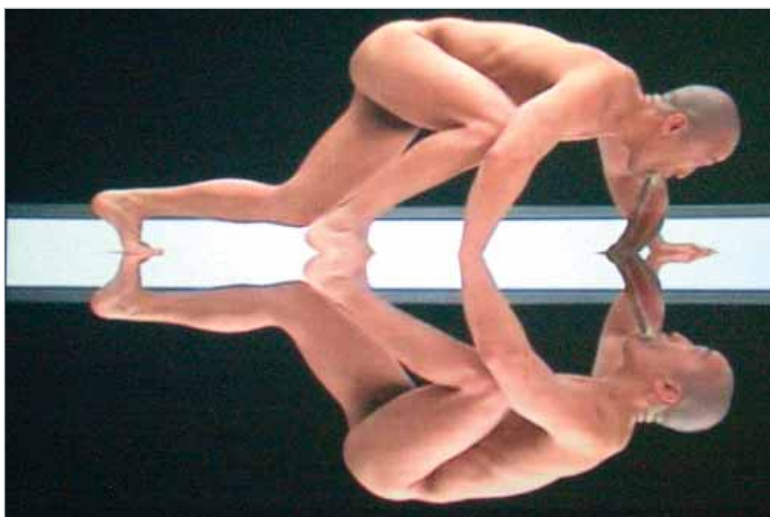
A digital scenic design by third-year drama graduate student **SOO LEE** has been selected by the United States Institute of Theatre Technology (USITT) to be displayed in the World Design Exhibit's annual convention to be held in Spring 2005 in Toronto, Canada. The exhibit features the top scenic designs by students from around the world.

## Alumni

**SHEETAL NAREN GHANDI** (BA Dance/Psychology 1995) is an ensemble member and understudy to the lead in the hit Broadway musical, *Bombay Dreams*. Sheetal was formerly a lead performer in Cirque du Soleil's *Dralion*.



Recent Studio Art alumni exhibitions include **DAVID KHANG** (MFA 2004) and **CARRIE PATTERSON** (MFA 2001) in a two-person show at the Paxico Gallery (Los Angeles, Oct. 2-31); **SUSAN CHOI** (MFA 2001) in a solo exhibition at the Fredericks Freiser Gallery (New York City, Sept. 10-Oct. 9); and **RHEIM ALKADI** (MFA 1999) in a solo exhibition at the Worth Ryder Gallery (UC Berkeley, Oct. 19-Nov. 5). Also, **GLENN KAINO** (BA 1994), **KORI NEWKIRK** (BA 1997) and **RUBEN OCHOA** (BA 2003) had pieces in the *2004 California Biennial Exhibition* at the Orange County Museum of Art (Oct. 12, 2004-Jan. 9, 2005).



David Khang's Linea Lingua

**CHRISTOPHER SOUSA-WYNN** (MFA Drama 2004) is the new resident designer for the Pacific Conservatory of the Performing Arts in Santa Rosa, CA.

**MARY ELLEN STROM** (MFA Studio Art 1998) was one of four Creative Capital grantees whose project was honored in the Public Art Network's *2004 Year in Review*, the Americans for the Arts survey of the "most successful, innovative and exciting public art projects in the U.S."



Gene Wie

Violinists **GENE WIE** (MFA Music 2003) and **GARRICK SOOHOO**, violist **JENNY VISICK** (BM 2001), and cellist **JOHN OTT** (BM 2004) formed the Elegie Quartet in 2001 while music students at UCI. The quartet has regular concerts, teaches in numerous K-12 and conservatory music programs in Southern California, and performs annually at summer festivals worldwide. Visit [www.elegiequartet.com](http://www.elegiequartet.com) for more information.

# Chancellor's Distinguished Fellows

## Chilingirian String Quartet

The Chilingirian Quartet was formed in 1971 and still features two of its founding members, violinist Levon Chilingirian and cellist Philip De Groot. Charles Sewart became second violin in 1992, and violist Susie Mészáros joined in 2001. With tours to nearly fifty countries on six continents and myriad recordings to its credit, the quartet is one of the world's most celebrated ensembles. It is the quartet-in-residence at the Royal College of Music, London.

The quartet will be in residence in the Department of Music, April 4-10, 2005. Master classes and lectures are free and open to the public. For a complete schedule, visit Events Calendar at [www.arts.uci.edu](http://www.arts.uci.edu).



## Highlights

### Mon., Apr 4

7-9 pm Master Class with UCI Rawlins String Quartet: Beethoven and Debussy. Winifred Smith Hall (WSH)

### Tues., Apr 5

7-9 pm Seminar: Beethoven's Late String Quartets. WSH

### Wed., Apr 6

1-5 pm Chamber Master Class: UCI Student Ensembles. WSH

### Thur., Apr 7

7-9 pm Open rehearsal discussing rehearsal techniques using a Haydn or Mozart quartet as a model and progressing through Romantic to 20th-Century works. WSH

### Sun., Apr 10

UCI Chamber and Chancellor's Distinguished Fellows Series present the Chilingirian String Quartet in Concert. Irvine Barclay Theatre

3 pm: Pre-concert discussion with composer Gerard Schurmann

4 pm: Concert

Beethoven: String Quartet, Op. 18, No. 1 in F Major  
Gerard Schurmann: String Quartet (U.S. premiere)  
Robert Schumann: Piano Quintet, Op. 44 in E-flat Major (Lorna Griffitt, piano)

Concert Tickets:

\$12 general audiences

\$10 UCI faculty, staff, seniors (62+)

\$ 8 UCI students and children under 18

UCLA Arts Box Office (949) 824-2787

Irvine Barclay Theatre (949) 854-4646

Ticketmaster (714) 740-2000



## Development Directions

We in Orange County are fortunate to have a wide selection of visual and performing arts readily available. The arts challenge us, give us pleasure and help us think and see in new ways.



Photo: Tave Olinus

Lisa Roetzel, Director of Development

One of the essential building blocks for a healthy arts community is arts education. The Claire Trevor School of the Arts gives its students the tools they need to succeed in their chosen discipline. Many of our alumni are the talented people you see on local stages and in exhibitions throughout southern California. Other alumni are arts leaders in communities throughout the U.S. and the world.

None of the artists you enjoy come to a professional career without help from others. Becoming an artist means working closely with master teachers and mentors, participating in special training opportunities, such as summer arts festivals, and relying on the support and encouragement of family, friends and patrons.

Here at the School, we call this network the Circle for the Arts. These generous friends help support many of the important educational programs, events and capital projects that could not take place without their assistance. Other Circle members support scholarships and fellowships, which open the doors to a university education for highly deserving students and those with financial need. Without their assistance, many special performances and exhibitions, master classes and guest lectures could not take place.

I hope you will consider becoming a part of the Circle. Gifts of any size are greatly appreciated, and a donation of \$100 or more will be included in the Circle for the Arts listing, which is printed in all event programs. For more information, please call the Development Office at (949) 824-8792 or give online at [www.uci.edu](http://www.uci.edu). Go to Alumni and Friends and click the "e-giving" button.

**"The plaza will be a tribute to all the traditional art forms... and opens the door for new creative art forms that stimulate and stretch the imagination"**

*UCI Chancellor Ralph J. Cicerone speaking at Arts Plaza event*



## Winifred & Robert Smith Receive UCI Medal



**WINIFRED AND ROBERT SMITH** were among those honored at the 20th annual UCI Medal ceremony and dinner. The UCI Medal, the campus' highest honor, recognizes individuals who have made extraordinary contributions to the mission, spirit and vision of UCI through their leadership, dedication and generosity.

"UCI is honored to recognize the dedication and public service of these exceptional individuals. Their extraordinary generosity and support reflects the spirit of the university's vital partnership with the community," said Chancellor Ralph J. Cicerone at the event in late October. "It is efforts such as these that give UCI a competitive edge as we continue to rise in the ranks of public research universities."

The Smiths from Newport Beach have supported music at UCI since the campus' inception in 1965, with Winifred playing the cello as a community volunteer in the first UCI Symphony Orchestra under the baton of Mehli Mehta. As supporters of the Claire Trevor School of the Arts, the Smith's generosity enabled the complete renovation of the school's 29-year-old Concert Hall.

The hall was renamed Winifred Smith Hall in her honor. The 200-seat facility is one of UCI's two leading theaters, and serves as a popular venue for the performing arts, visiting artists programs and lectures in the arts. It is known for its outstanding acoustics.

In 1985, the Smiths established an endowment through the Philharmonic Society of Orange County to fund a cello scholarship at UCI. In 1995, the couple established another endowed fund that provides an annual scholarship for undergraduate students studying cello, violin or piano. The Smiths are also members of the Chancellor's Club Scholar's Circle and Town and Gown.

*Hall named after Winifred Smith*



## Maya Lin Joins Celebration for Arts Plaza

*From Page 1*

Fragrant and colorful plants, including native flowers and orange trees, will distinguish the landscaping.

The centerpiece "water table," Lin noted, will feature a delicate line drawing carved into the sculpture's surface. "In the end," she said, "the heart of this piece is made up of the simple act that an artist makes – a sketch upon a piece of paper."

Dean Nohema Fernández stressed the renovation's importance. "The courtyard – a vital part of the School's infrastructure – needs to better meet the needs of a progressive arts school. The new Arts Plaza will expand our venues for performing and exhibiting art.

"Maya's design blends art and technology to offer an outside learning and gathering place for students, faculty and the community. It will serve as a focal point for the university and a major public work of art for the region."

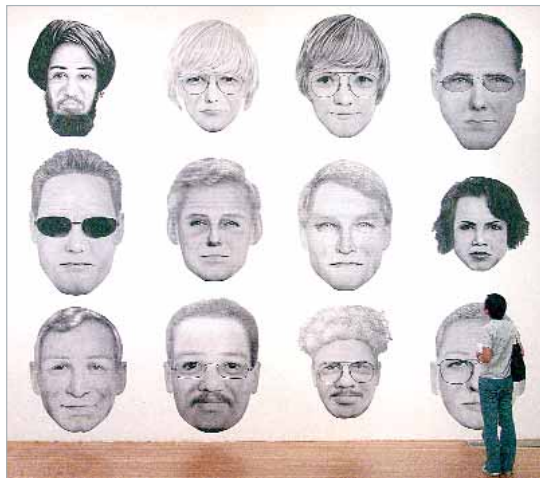
The project's design and construction are expected to cost \$3.6 million, with completion planned for summer 2005.



*Robert and Margaret Sprague (left and far right), and John and Elizabeth Stahr are Honorary Co-Chairs for the Arts Plaza campaign*



# Artful Images are on the House at CyberA Café



**THEY COME TO STUDY, CHAT, EAT AND EVEN REHEARSE.** They also come to look. It's the CyberA Café and there's more going on than just coffee, sandwiches and good company.

The CyberA, across from Winifred Smith Hall and next to the University Art Gallery (UAG), first opened in late 2001 to provide students, faculty and staff with a hip, casual spot to socialize and experience something of the digital world. The unique feature is a revolving array of artistic images displayed on a large plasma screen.

The work of Studio Art students is often presented, giving visitors the chance to see pieces that they may have missed at recent UAG exhibitions.

Yong Soon Min, the chair of the Studio Art Department, says the CyberA is a valuable part of the campus' aesthetic experience.

"It's a smart way to extend the 'life' or visibility of these artworks by students, and an opportunity to reach new viewers," she says. "It's always a pleasant surprise whenever I'm at the register to pay for some munchies to look up and see a familiar image from an exhibition I've seen in one of our galleries."

Loy Zimmerman, curator for the Claire Trevor School of the Arts' Visual Resources Collection, is responsible for organizing the computer-based shows at the café. He draws from the School's vast archive of art and photos from gallery shows and more, including drama productions and dance and music concerts. Zimmerman is also in the process of making it easier for artists, designers and others with a digital bent to submit their new work for consideration in upcoming shows.

"We display a fairly wide range of visual material, some of it analog, some digital, some documentary artwork," he notes. "I hope, in fact, to expand the shows by reaching out more broadly to faculty and students working in [all] digital media."

Zimmerman explains that the CyberA's mission is two-fold, to "promote discussion about the arts and provide visibility for the creative works produced within the School." It gives students, faculty, staff and visitors a ready opportunity to experience, albeit indirectly, the many sides of the School's artistry.

Sarah Limon, an 18-year-old sophomore, likes what she's seen. Limon, who often has lunch at the CyberA with a friend, says she enjoys taking it easy between classes while watching Zimmerman's rotating shows on the 42-inch screen. She visits the café a few times a week and is rarely disappointed.



Photo: Philip Channing

"The photos are interesting, especially those of the theatre productions, which I like because my girlfriend is in the Drama Department," she says. "I can't say [the imagery] is the main reason I come, but I do notice it. I don't know of another place that does this."

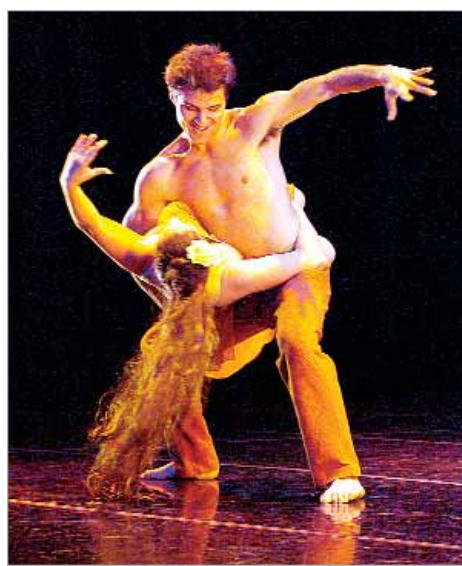


Photo: Frank Peters

## CyberA Café hours

Regular hours for the CyberA Café, now managed by the Aramark Corporation, are Mon.-Thur., 7:30 am-7 pm, and Fri, 7:30 am-2 pm. The café also plans to be open for light refreshments during scheduled performances at venues in the Arts Plaza.

Actually, there is another place. The Starbucks on California Avenue in UCI's University Research Park also displays the same images seen at the CyberA. Zimmerman notes that customers have been as appreciative at Starbucks as they are at the café. "The reaction at the café was so positive that Starbucks wanted to be involved," he says. "The experience has been valuable for everyone."



But it all started with the CyberA. The digital element has always made it different from most coffee shops, but the café has become something of a landmark for another reason: it's an ideal place for classmates, especially from the School, to discuss their work. You'll often see drama students rehearsing lines from a play or class project or other students gabbing about their art, music or dancing.

Carl Lee, a 20-year-old junior, is studying engineering but still enjoys visiting the CyberA because of the positive energy. "It's fun when you're there having coffee or whatever and someone nearby is really getting into a play reading. It's like a little performance."

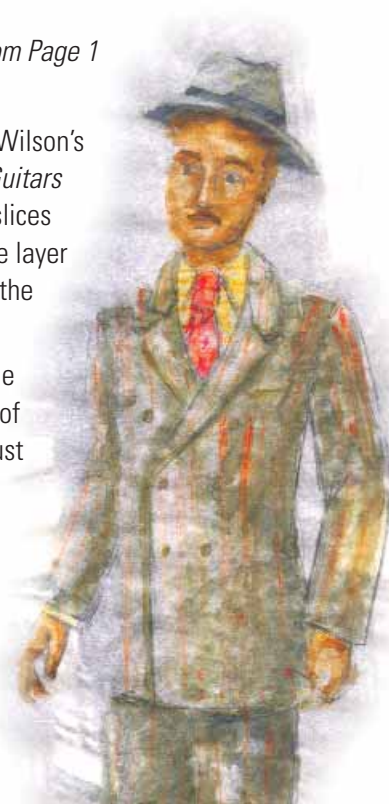
## A Fine August Play at UCI From Page 1

Although some of UCI's regular audience may not be familiar with Wilson's work, Simon is confident that everyone will find it affecting. "Seven Guitars is often described as a 'slice of life' play," he says. "But if most such slices afford a narrow view through a tiny peephole, Wilson offers up a triple layer cake, inviting us to the feast with open arms. The characters are rich, the language melts in your mouth, and the action is sumptuous."

Simon added that the drama presents powerful opportunities for the student cast as well. "This is a quintessential ensemble piece — each of the seven actors plays a leading role," he explains. "Therefore, we must engender a pervading sense of collaborative spirit. My hope is that by digging deeply into the hearts of these characters, we will access the places where hope, anger and jubilation live."

(See Page 6 Calendar for ticket information.)

Costume rendering for Seven Guitars created by student designer Nicole Korzenik.



**UCLArts**  
Claire Trevor School of the Arts

## UCLArts Quarterly

January, 2005, No. 13

UCLArts Marketing

Claire Trevor School of the Arts

Dean: Nohema Fernández

Marketing: Wendy Day-Brown

Editor: Mark Chalon Smith

Writers: Scottie Hinkey, Mark Chalon Smith, Lori Brandt

Plaza Photographer: Laurel Hungerford

Masthead Artist: Jackie Lee

Design: Rob Sexton, S2 Design



# Winter 2005 Calendar

## January

University Art Gallery  
Selected Undergraduate Exhibition  
Room\*

### Emerging Artists

Jan 13-Feb 4

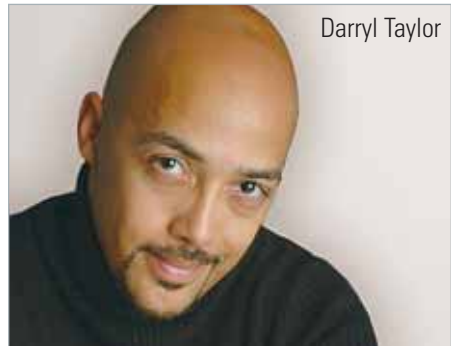


### ▲ Beall Center for Art and Technology<sup>†</sup> **LEMUR: League of Electronic Musical Urban Robots**

Jan 14-Mar 19

Opening Reception: Jan 13, 6-9 pm

The LEMUR orchestra, a quintet of diverse musical robots, is presented in an interactive installation.



Darryl Taylor

### ▲ UCI Chamber Series **American Giants: Paul Laurence Dunbar and Langston Hughes**

Sat, Jan 22, 8 pm

Winifred Smith Hall, \$12/10/8

Darryl Taylor, tenor; Lorna Griffitt and Richard Thompson, piano; Margaret Parkins, violoncello

### Drama at UCI Mainstage

#### **Seven Guitars**

By August Wilson

Eli Simon, director

Fri-Sat, Jan 28-29, 8 pm

Thur-Sat, Feb 3-5, 8 pm

Matinee: Sat, Feb 5, 2 pm

Claire Trevor Theatre

Fri & Sat eve: \$17/15/9

Weeknight & matinee: \$15/14/9

(see story page 1)

## February

### Drama at UCI Stage 2

#### **The Arabian Nights**

by Mary Zimmerman

Annie Loui, director

Thur-Sat, Feb 3-5, 8 pm

Thur-Sat, Feb 10-12, 8 pm

Matinees: Sat, Feb 5 & 12, 2 pm

Studio Theatre, \$10/9/8

This music- and movement-rich adaptation reacquaints us with Scheherazade's tales of love, lust, humor and dreams.

### University Art Gallery and Room\*

#### **MFA 1 Exhibition**

Feb 10-18



Photo: Paul Kennedy

### ▲ UCI Symphony Orchestra **String Serenades**

Stephen Tucker, conductor

Fri-Sat, Feb 11-12, 8 pm

Pre-concert conversation: Fri, Feb 11, 7 pm

Claire Trevor Theatre, \$12/10/8

Neilsen: Little Suite for Strings

Elgar: Serenade for Strings

Bartók: Romanian Folk Dances

Tchaikovsky: String Serenade

### **Valentine's Concert**

Joseph Huszti, conductor

Sun, Feb 13, 7 pm

Mon, Feb 14, 8 pm

Winifred Smith Hall, \$12/10/8

### UCI Chamber Series

#### **UCI Faculty Showcase**

Sat, Feb 19, 8 pm

Winifred Smith Hall, \$12/10/8

Beethoven: Sonata for Horn & Piano, op. 17

Brahms: Trio for Violin, Horn & Piano, op. 39

Haroutune Bedelian, violin; Margaret

Parkins, violoncello; Daniel Katzen, horn;

Alan Terricciano, piano



Photo: Paul Kennedy

### ▲ **Dance Visions 2005**

UCI's annual dance extravaganza offers premieres and restagings of great dance works in three mixed repertoire programs.

Irvine Barclay Theatre

Fri & Sat eve: \$15/13/9

Thur & matinee: \$12/10/9

**Program A: Thur, Feb 24 & Sat,  
Feb 26, 8 pm**

William Forsythe: *The Questioning of*

*Robert Scott* (1986) staged by Douglas

Becker. A workshop version-accessing

Forsythe technique in a performance setting

David Allan: *Pastel* (1985)

Donald McKayle: *Beat/Beatific: An Era Revisited* (premiere). Original music by Kei Akagi performed by the Jazz Soloists Ensemble

Loretta Livingston: An outdoor work set to original music by Alan Terricciano

**Program B: Fri, Feb 25, 8 pm & Sat,  
Feb 26, 2 pm**

George Balanchine: *Serenade* (1935)

staged by Leslie Peck. Music by

Tchaikovsky played by the UCI String

Orchestra conducted by Stephen Tucker

David Allan: *Pastel* (1985)

Bob Boross: *Diaspora* (premiere)

Lisa Naugle: Untitled (premiere) with

original music by Alan Terricciano

**Program C: Sun, Feb 27, 2 pm**

George Balanchine: *Serenade*

Donald McKayle: *Beat/Beatific: An Era*

*Revisited*

William Forsythe: *The Questioning of*

*Robert Scott*

(Program at time of printing. Visit

[www.arts.uci.edu/events](http://www.arts.uci.edu/events) for special

Saturday pricing when attending both the

matinee Program B and the evening

Program A performances.)

### University Art Gallery

#### And Room\*

#### **MFA 2 Exhibition**

Feb 24-March 11

## March

### UCI Choirs

Fri, March 4, 8 pm

Winifred Smith Hall, \$5 all seats



### ▲ UCI Jazz Orchestra

#### **Winter Jazz Concert**

Charles Owens, conductor

Sat, March 5, 8 pm

Claire Trevor Theatre, \$12/10/8

### UCI Chamber Series

#### **Hausmusik, an Evening of Song and Chamber Music by Schumann and Schubert**

Robin Buck, baritone

Nina Scolnik, piano

Sun, March 6, 8 pm

Winifred Smith Hall, \$12/10/8

### UCI Gospel Choir

Mickeal McCool, conductor

Mon, March 7, 8 pm

Claire Trevor Theatre, \$5 all seats

### Drama at UCI Stage 2

#### **Mad Forest**

By Caryl Churchill

Krista Cowan, director

Thur-Sat, March 10-12, 8 pm

Wed-Thur, March 16-17 & Sat, March 19,

8 pm

Matinees: Sat, March 12 & 19, 2 pm

Studio Theatre, \$10/9/8

The Romanian revolution of 1989, which toppled Nicolae Ceausescu's dictatorship, is brilliantly recalled.



### ▲ **A Night at the Opera**

Two Comedies Performed in English

Robin Buck, stage director

Ben Makino, music director

Fri-Sat, March 11-12, 8 pm

Winifred Smith Hall, \$12/10/8

**The Telephone (or L'Amour a Trois)** by Gian-Carlo Menotti. A witty *menage a trois* for soprano, baritone and telephone.

**Signor Deluso** by Thomas Pasatieri. A hilarious *Commedia dell'Arte* comedy of errors involving mistaken identities, scandal and wrong conclusions. Based on Moliere's play *Scagnarelle*.

### UCI Percussion Ensemble

Theresa Dimond, conductor

Mon, March 14, 8 pm

Winifred Smith Hall

Free, tickets are required

### University Art Gallery

#### and Room\*

#### **Senior Exhibition**

March 17-24

### UCI Symphony Orchestra

#### **The British Are Coming!**

Stephen Tucker, conductor

Thur, March 17, & Sat, March 19, 8 pm

Pre-concert conversation: Thur, March 17, 7 pm

Claire Trevor Theatre

Quilter: Children's Overture

Weber: Clarinet Concerto No. 2

Soloist: Amanda Walker, clarinet

Elgar: Enigma Variations

### †Beall Center for Art and Technology

Admission is free. Information and gallery

hours: (949) 824-4339 or

<http://beallcenter.uci.edu>

### \*University Art Gallery, bldg 712, and Room, bldg 727, rm 1200

Gallery hours: Tues-Sat, noon-5pm. Admission is free. Information: (949) 824-9854

# UCLArts

Claire Trevor School of the Arts

## Tickets & Information

Visit [www.arts.uci.edu](http://www.arts.uci.edu) for...

- Events Calendar
- Ticket Information
- Campus Maps

Call UCLArts Box Office 949-824-2787